

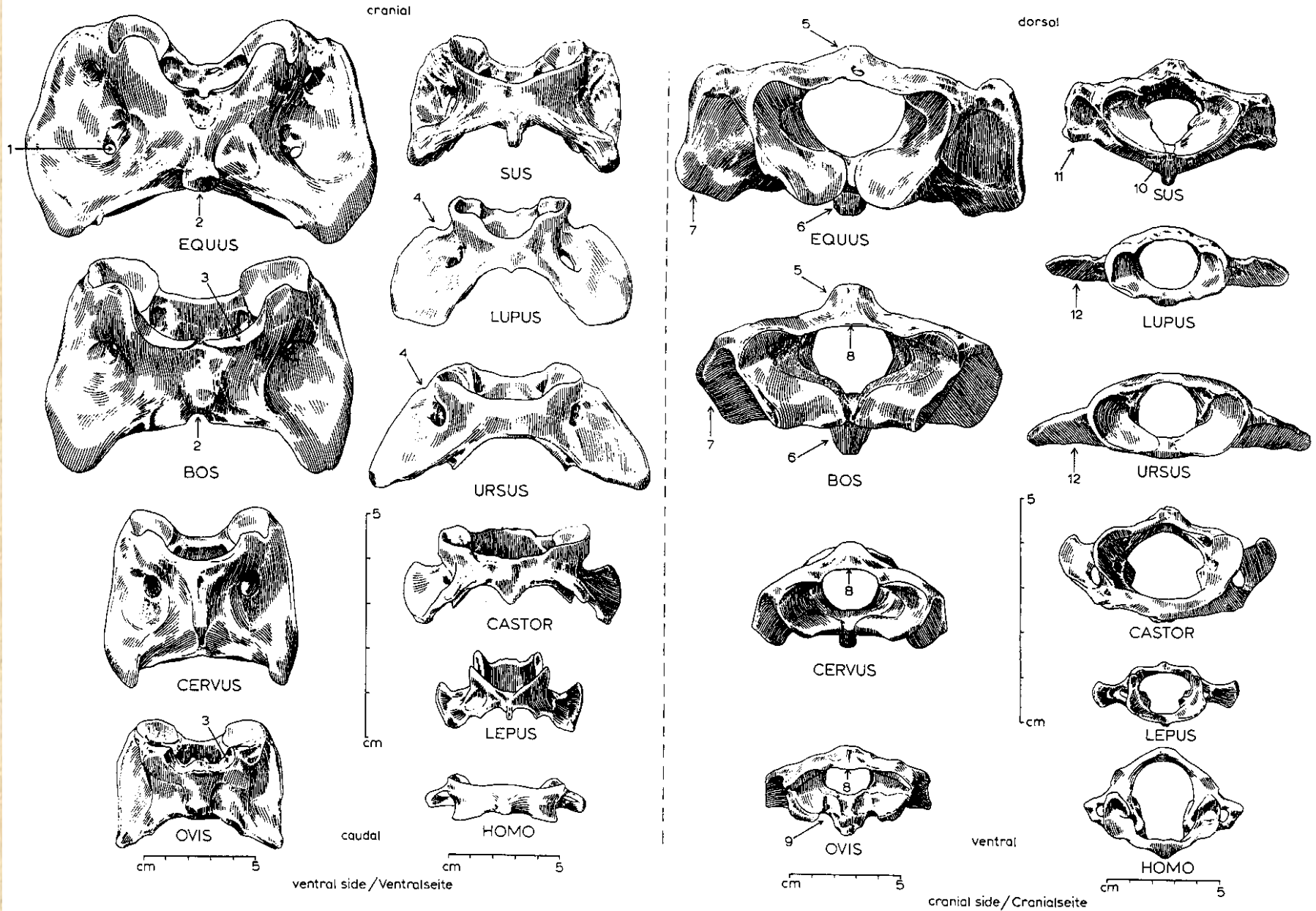
Základy osteologie

Obratle, žebra a kosti přední končetiny



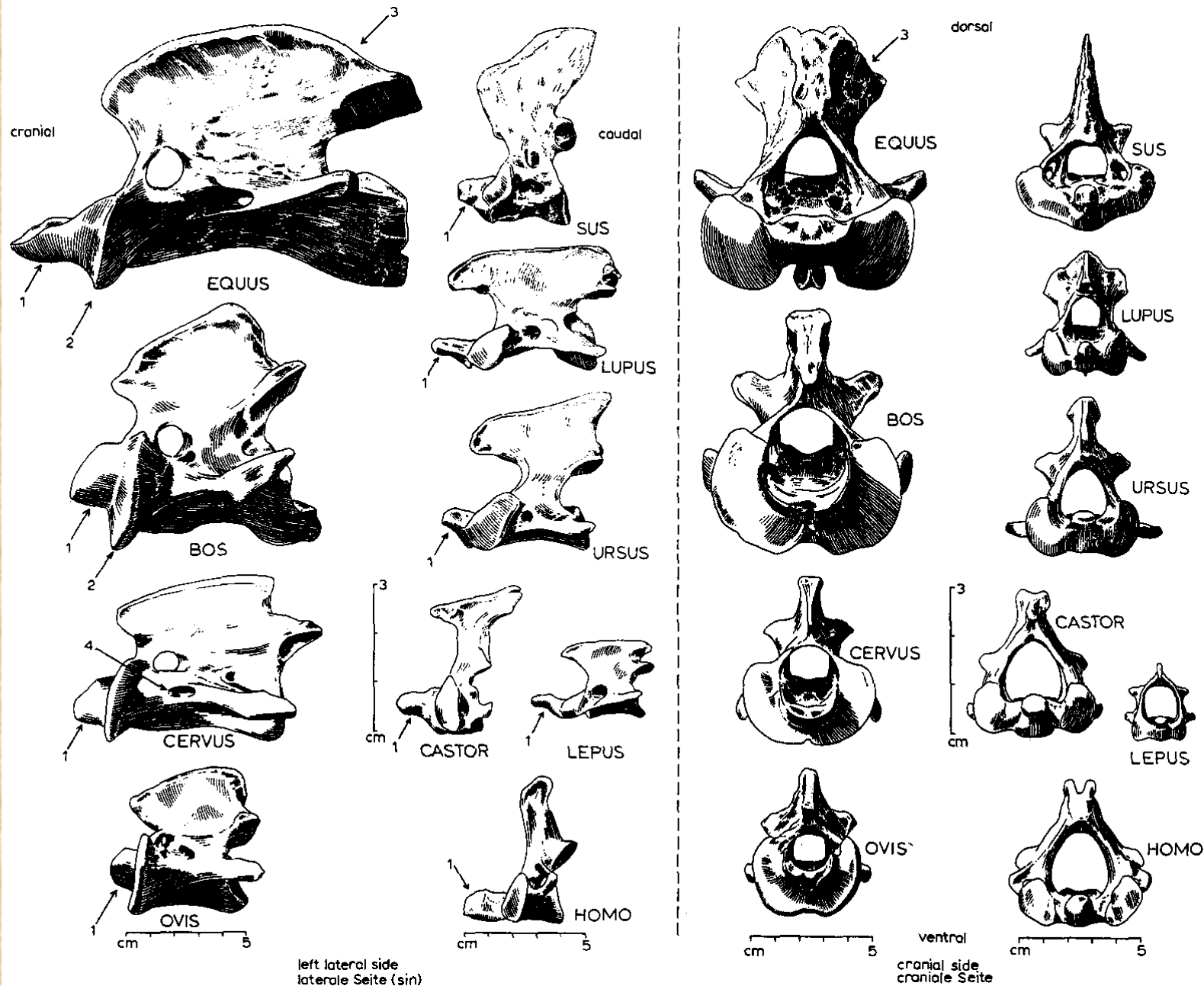
Obratle a žebra

Atlas (nosič)



Obratle a žebra

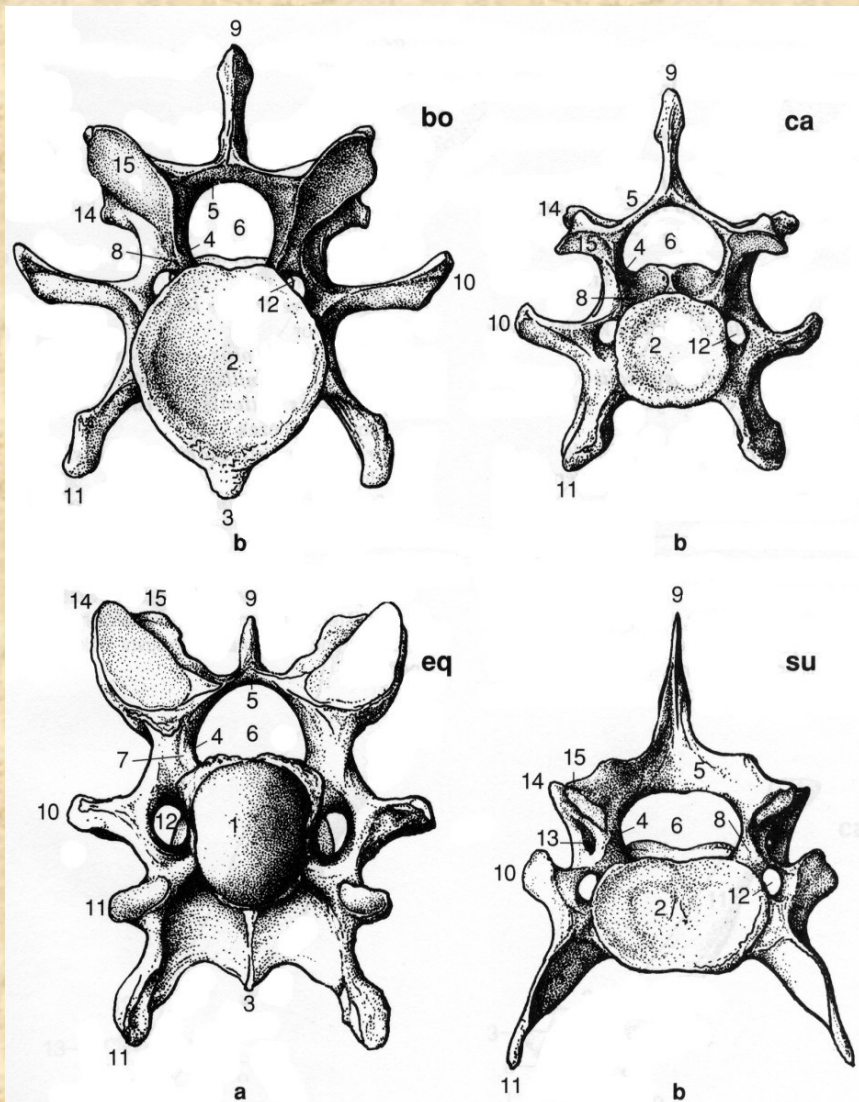
Epistrofeus (čepovec)



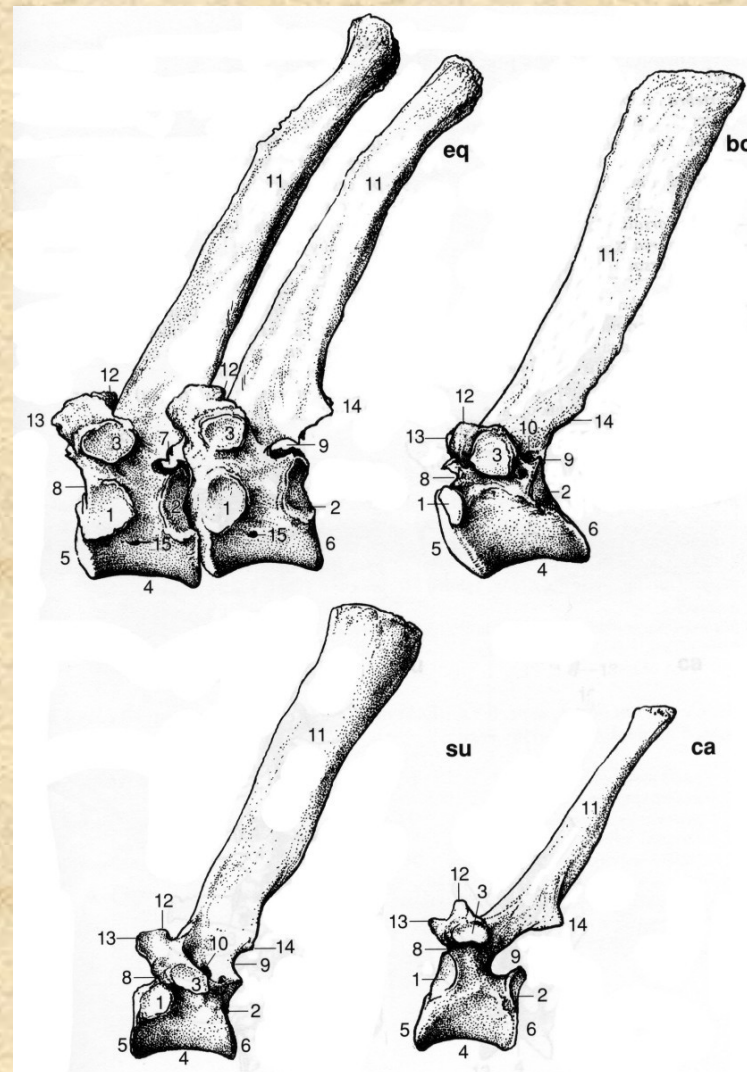
left lateral side
laterale Seite (sin)

ventral
cranial side
craniale Seite

Obratle a žebra

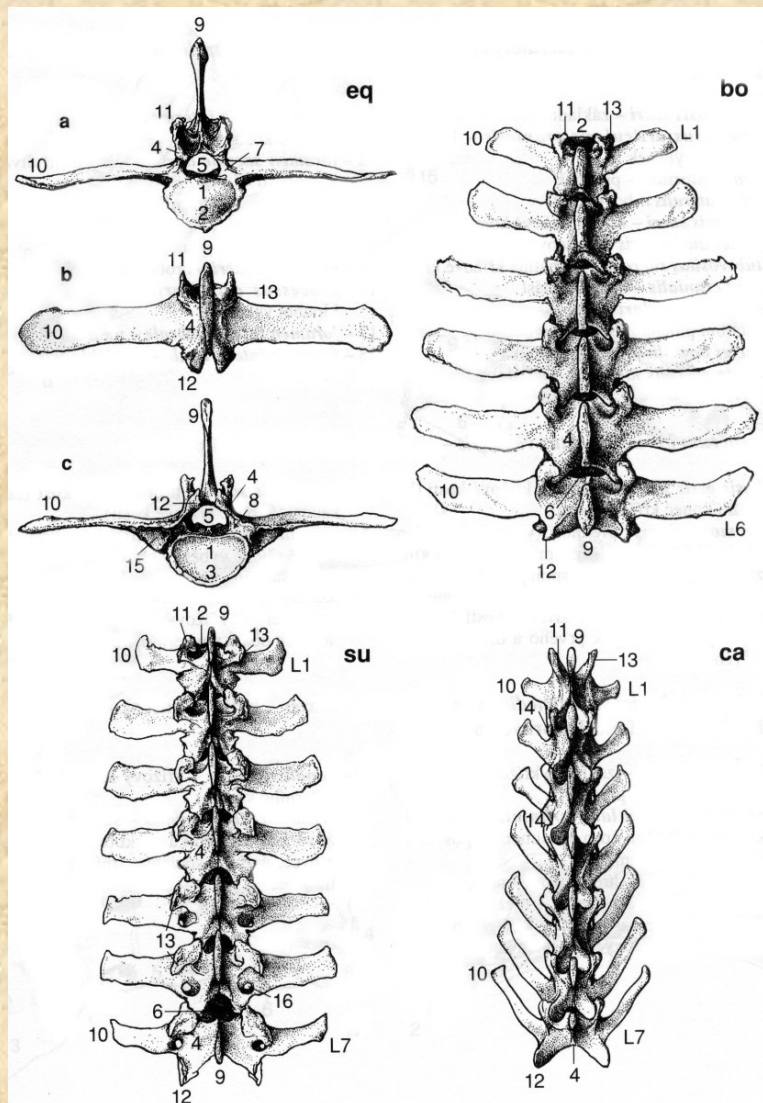


Krční obratle (*vertebra cervicis*)

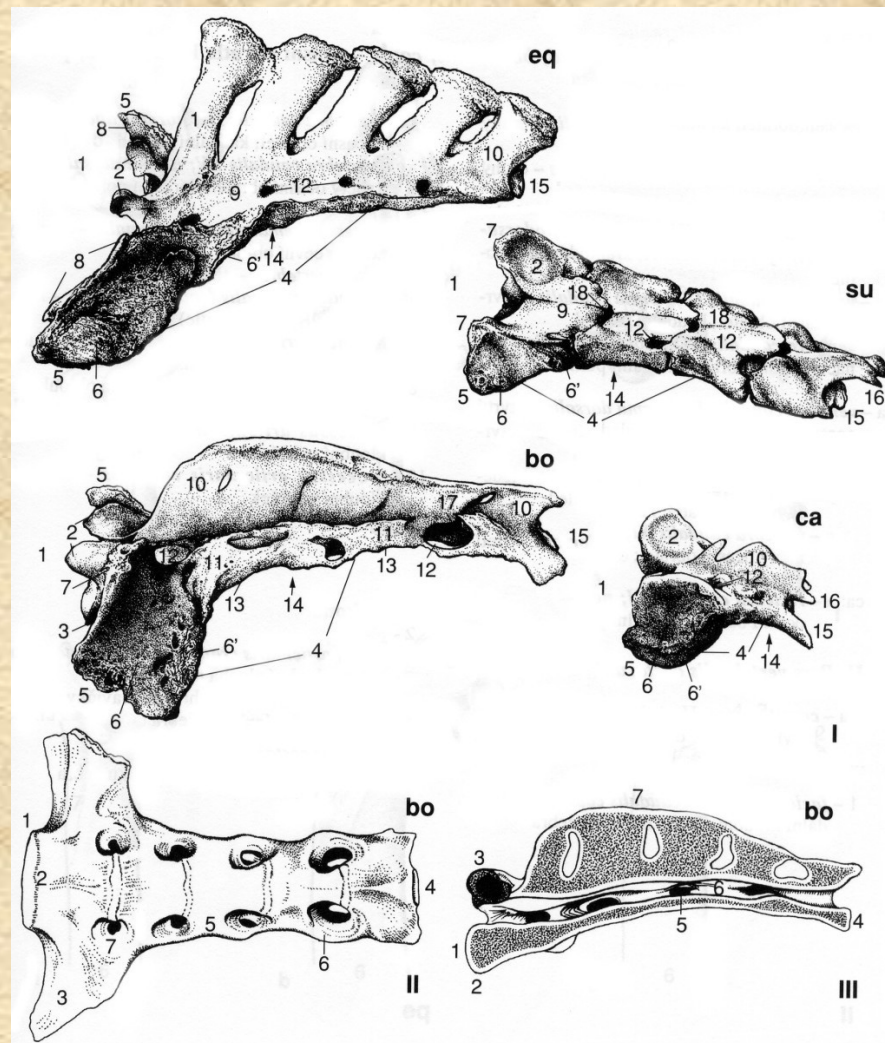


Hrudní obratle (*vertebrae thoracicae*)

Obratle a žebra

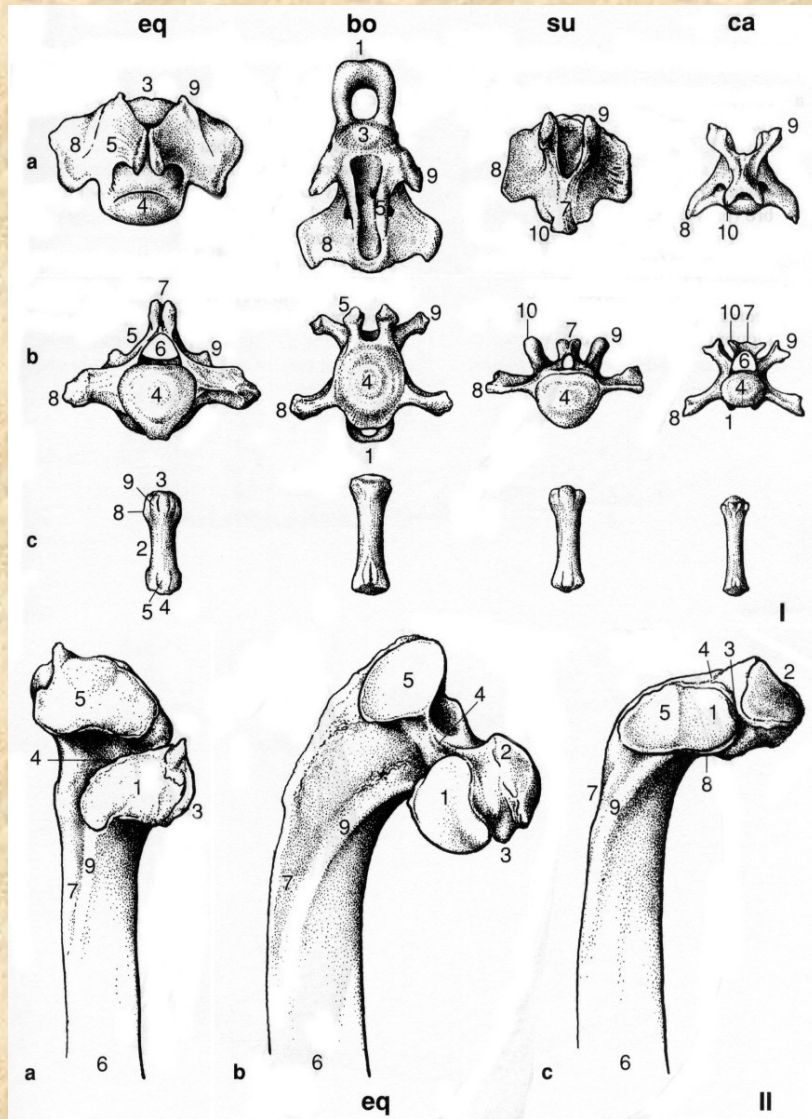


Bederní obratle (*vertebrae lumbales*)

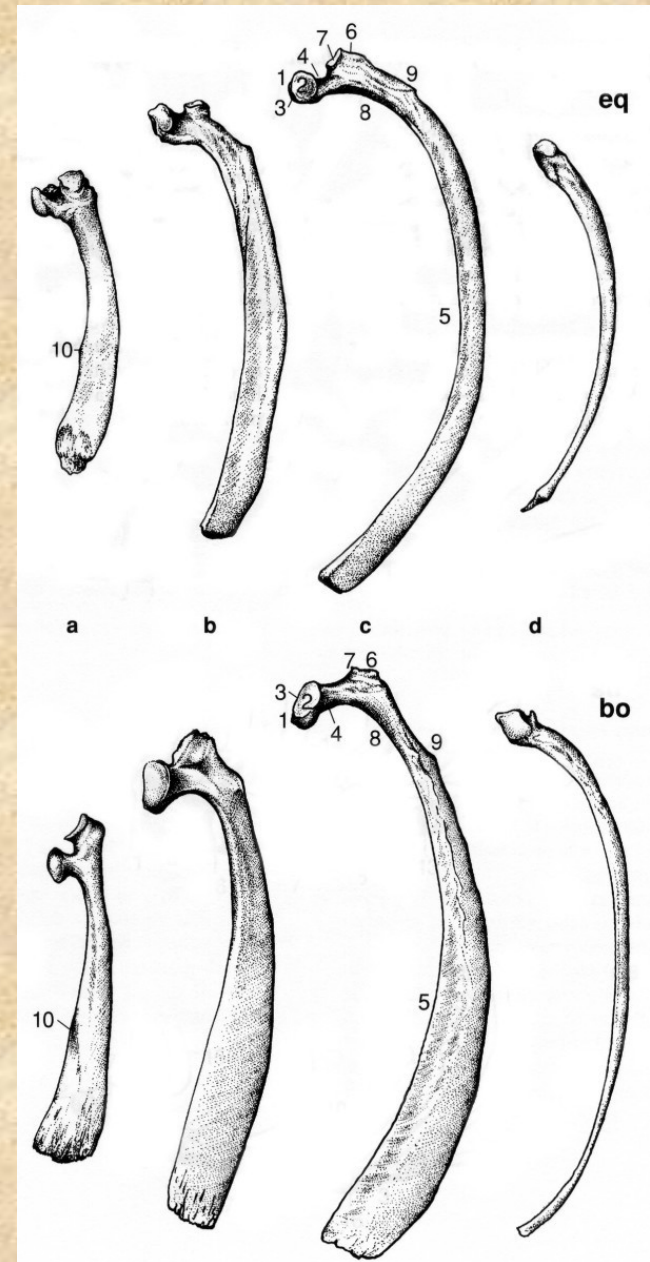


Kost křížová (*os sacrum*)

Obratle a žebra

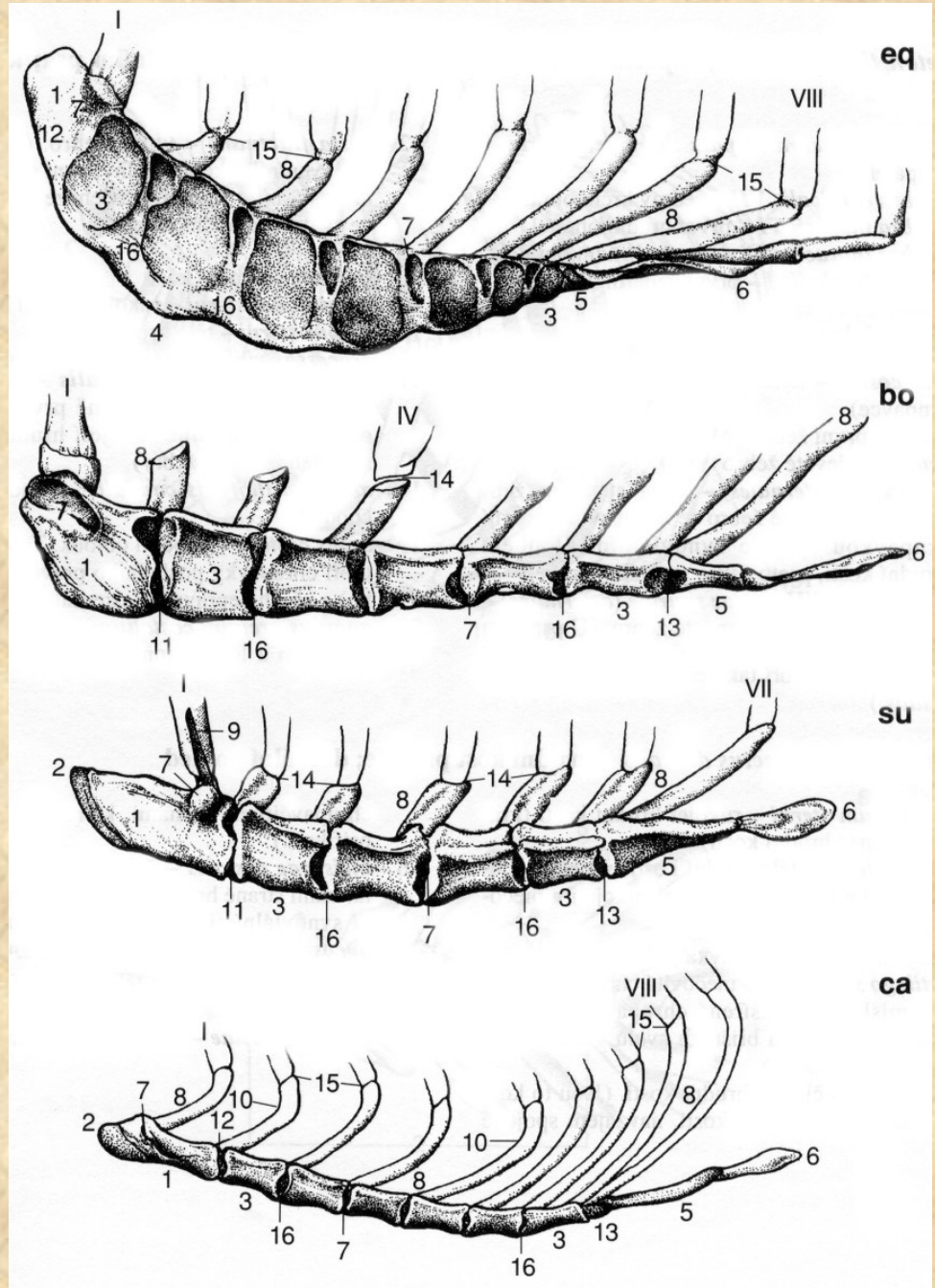


**Ocasní obratle (*vertebrae caudales*)
a hlavičky žebří (caput costae) koně**

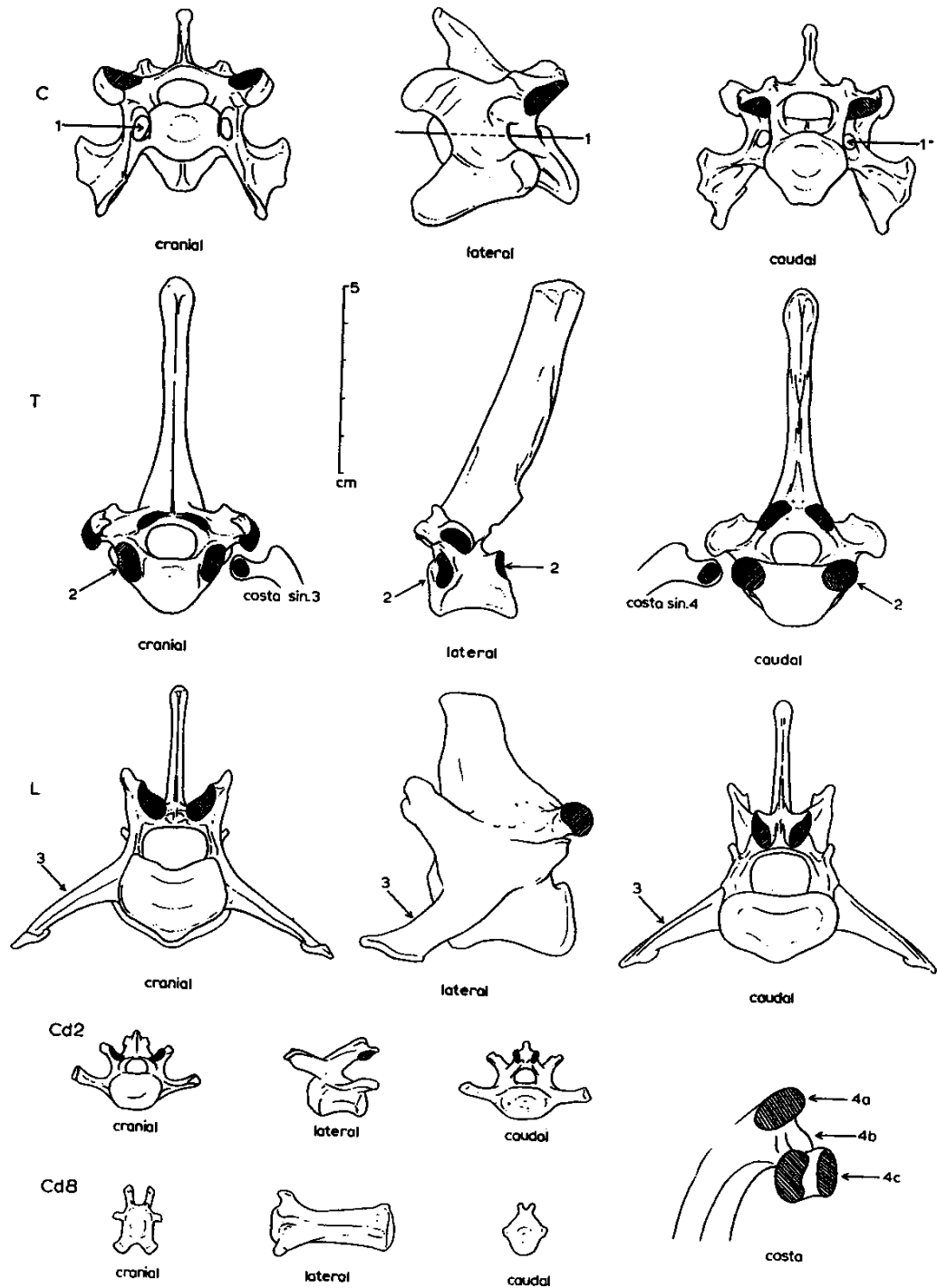


Žebra (*costae*)

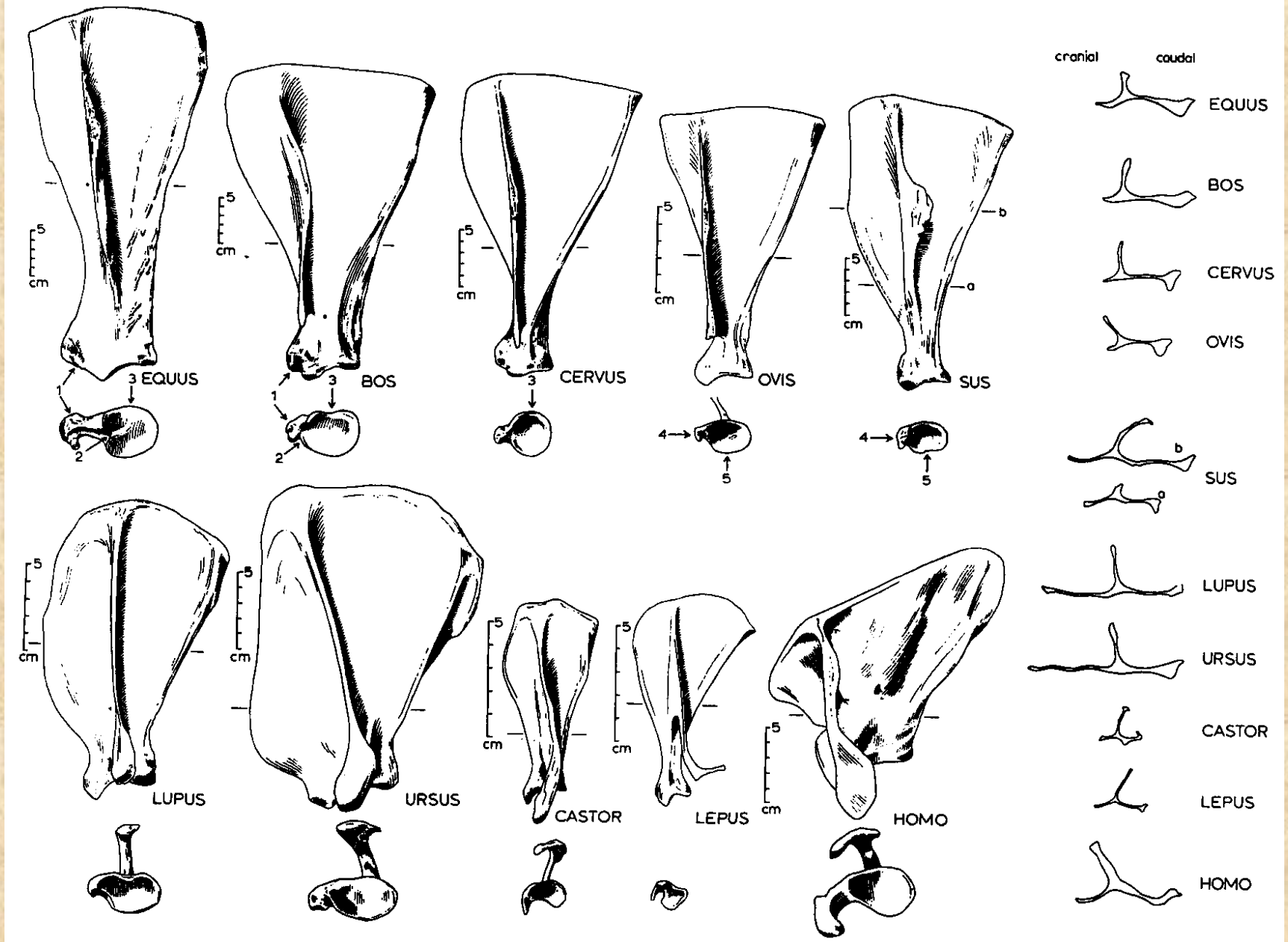
Hrudní kost (*sternum*)



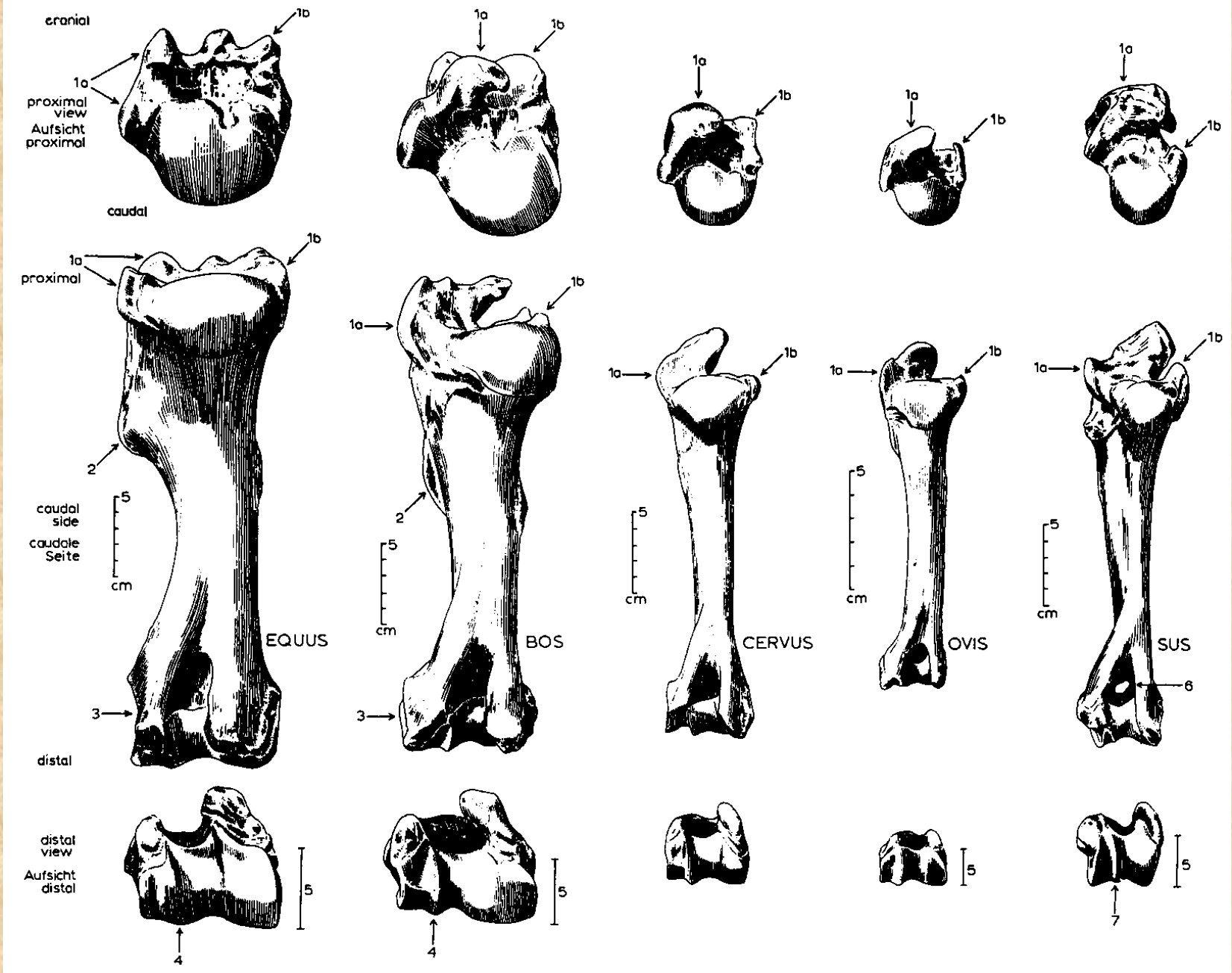
Obratle vlka



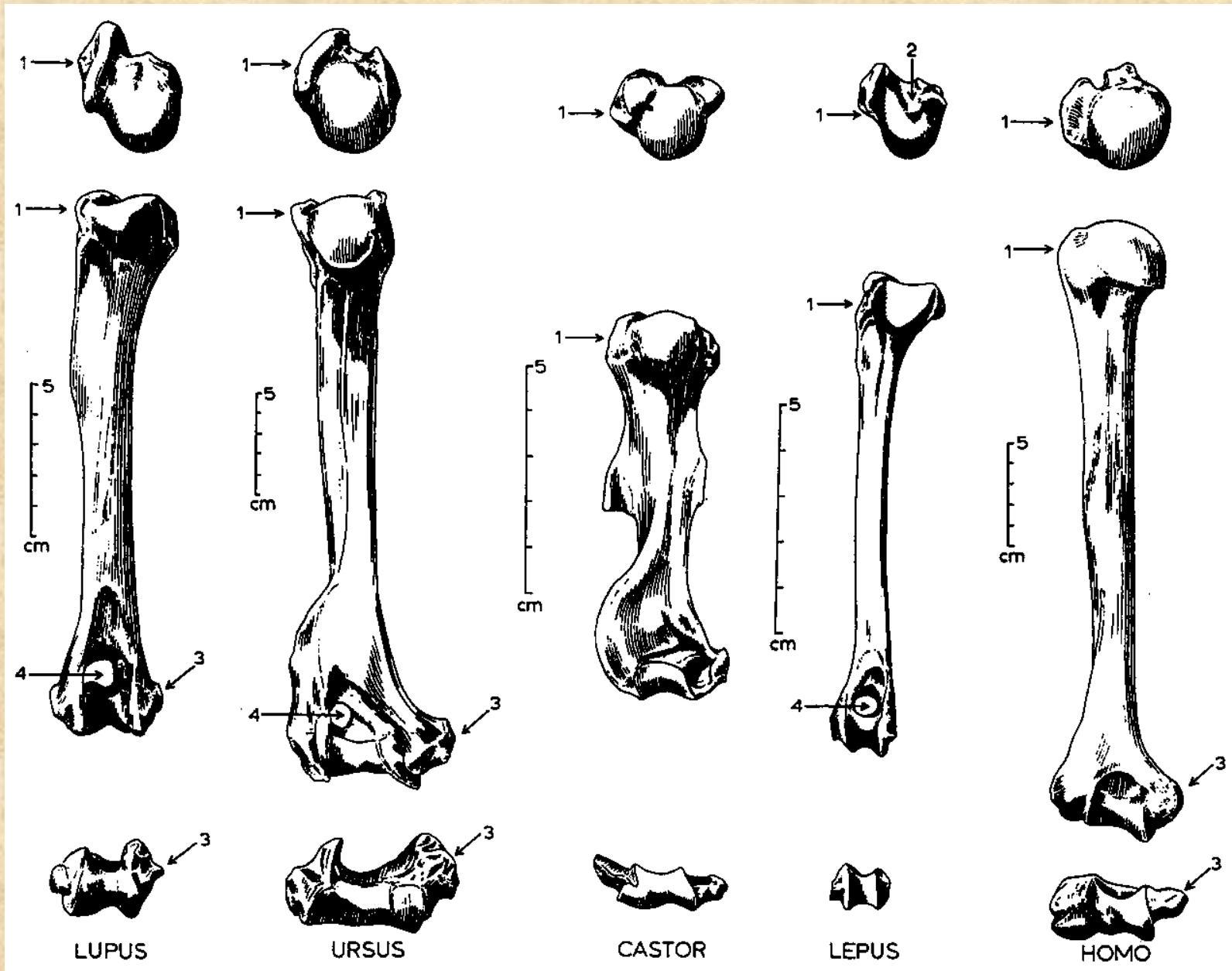
Lopatka (*scapula*)



Pažní kost (*humerus*)



Pažní kost (*humerus*)



LUPUS

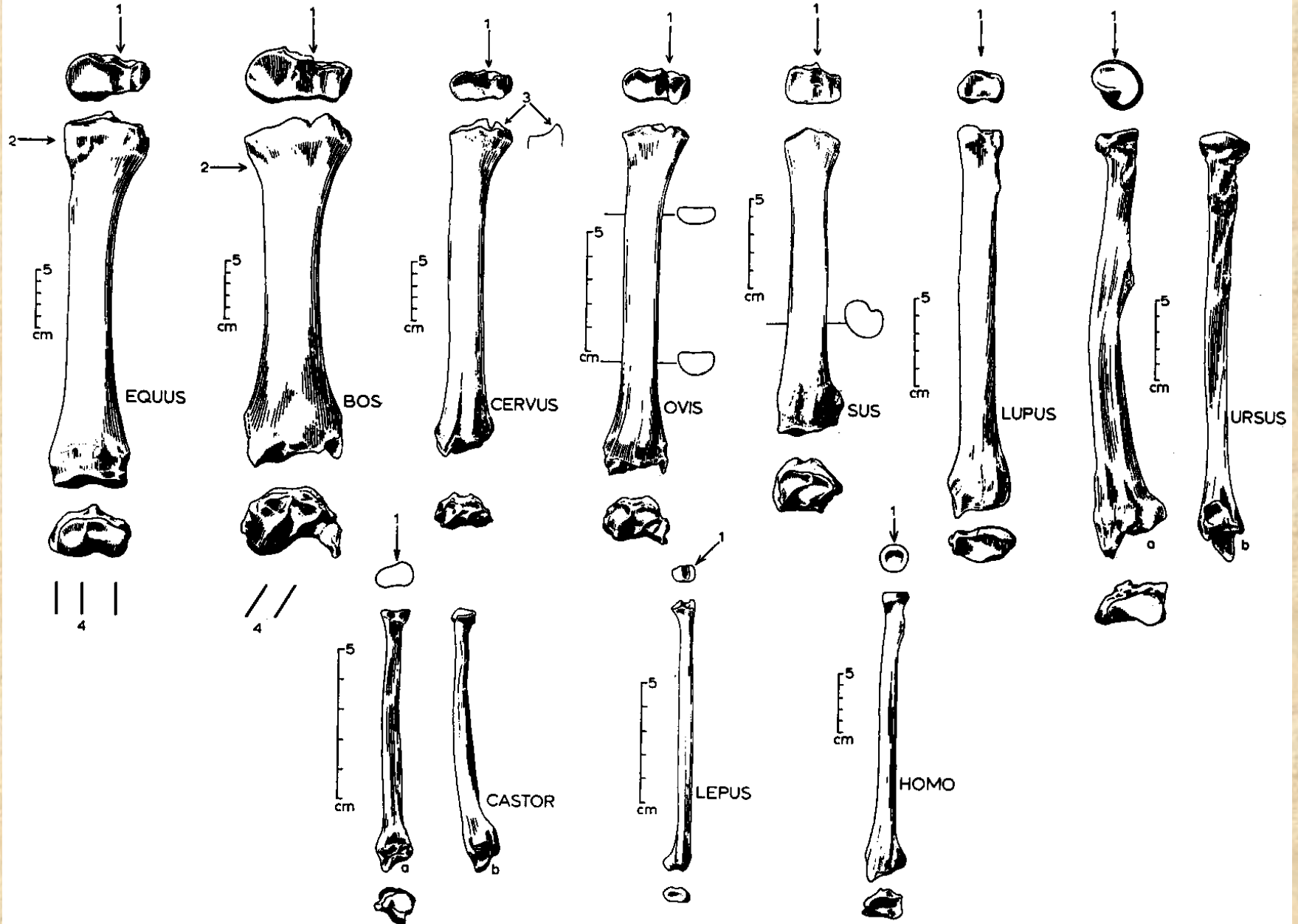
URSUS

CASTOR

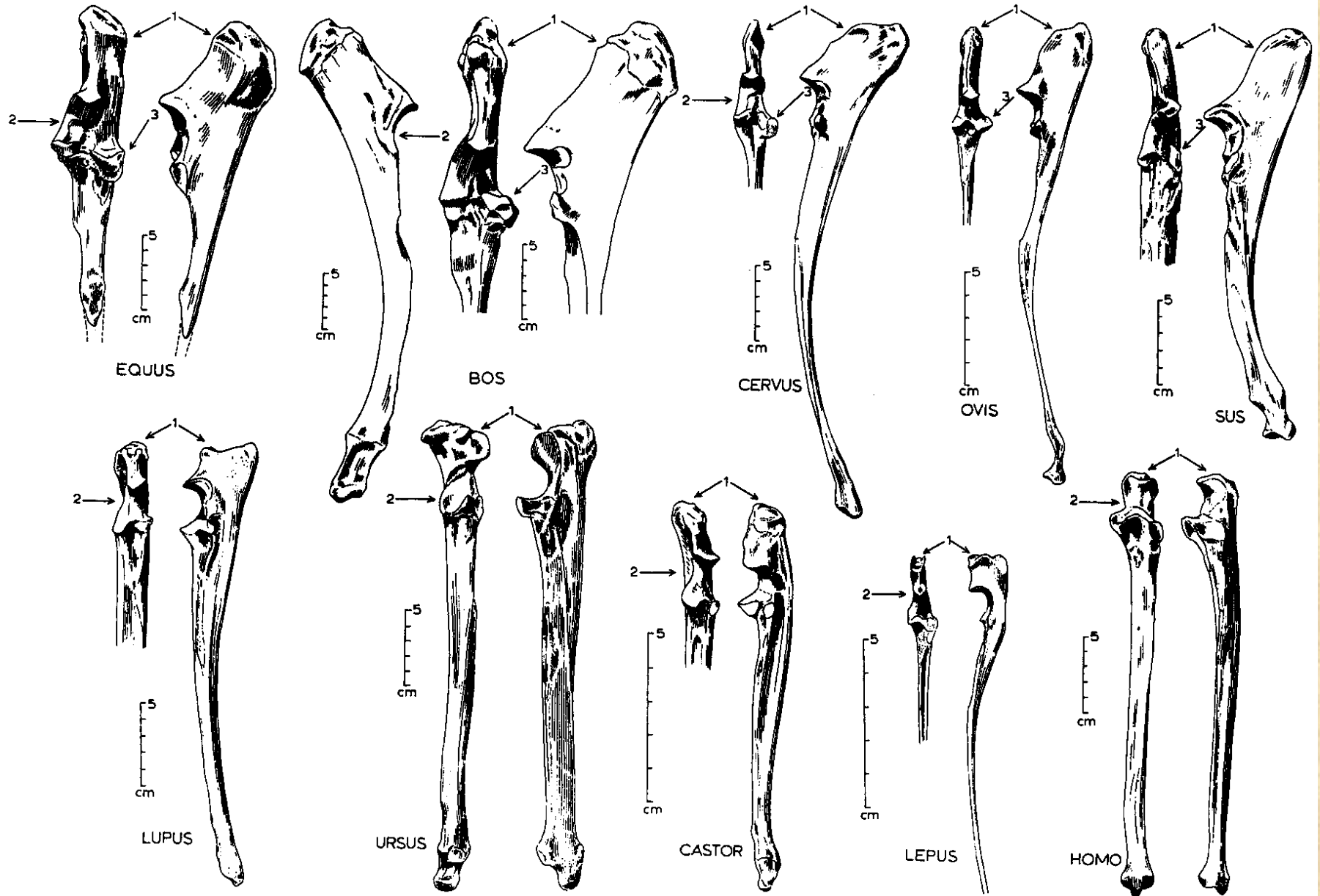
LEPUS

HOMO

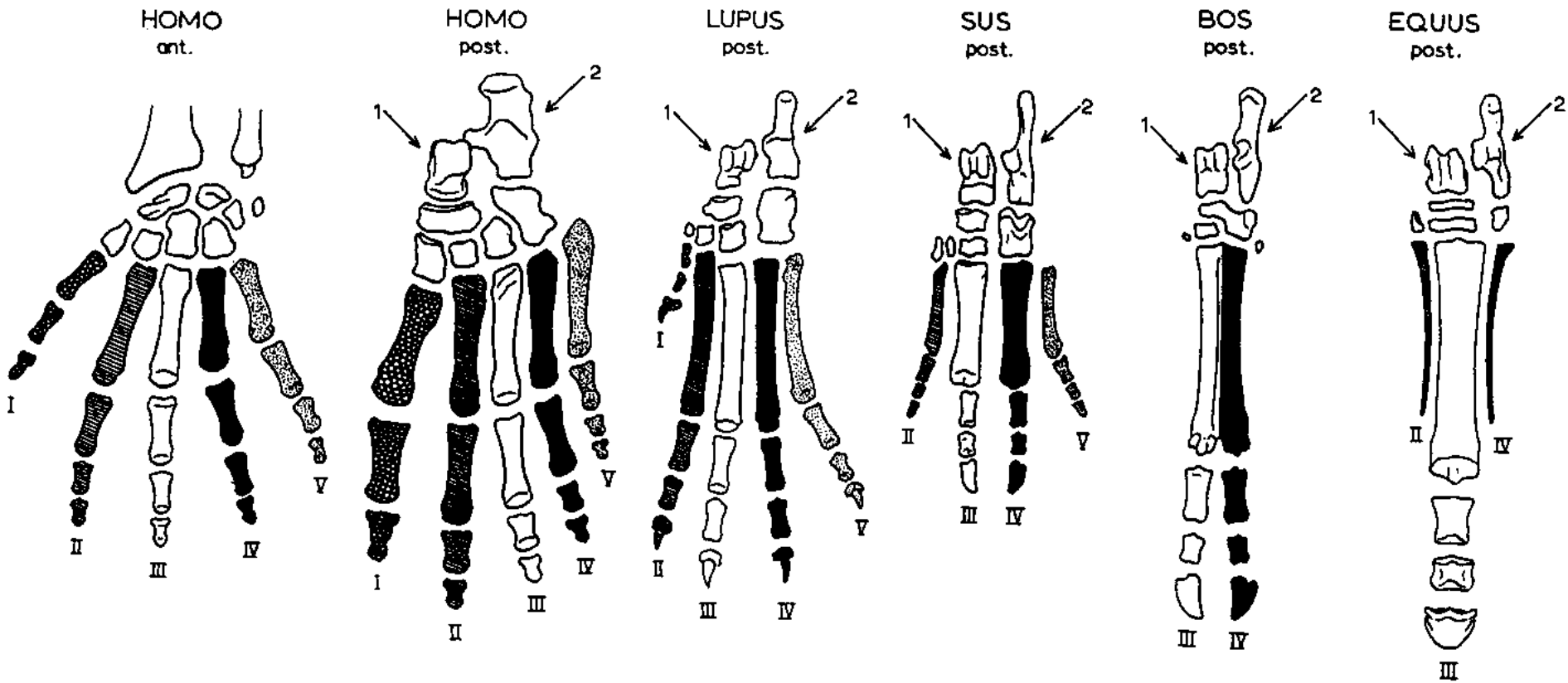
Vřetenní kost (*radius*)



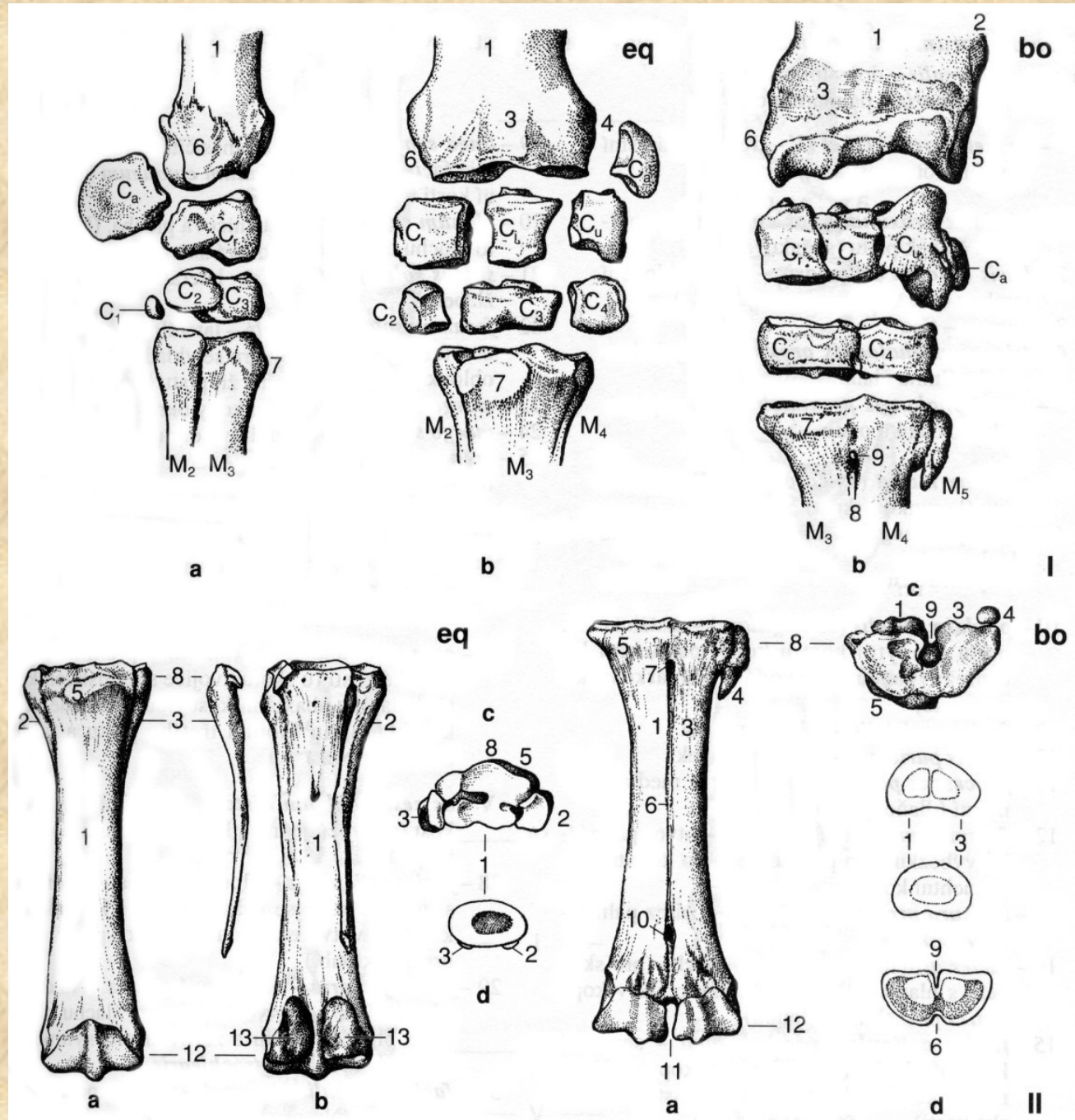
Loketní kost (*ulna*)



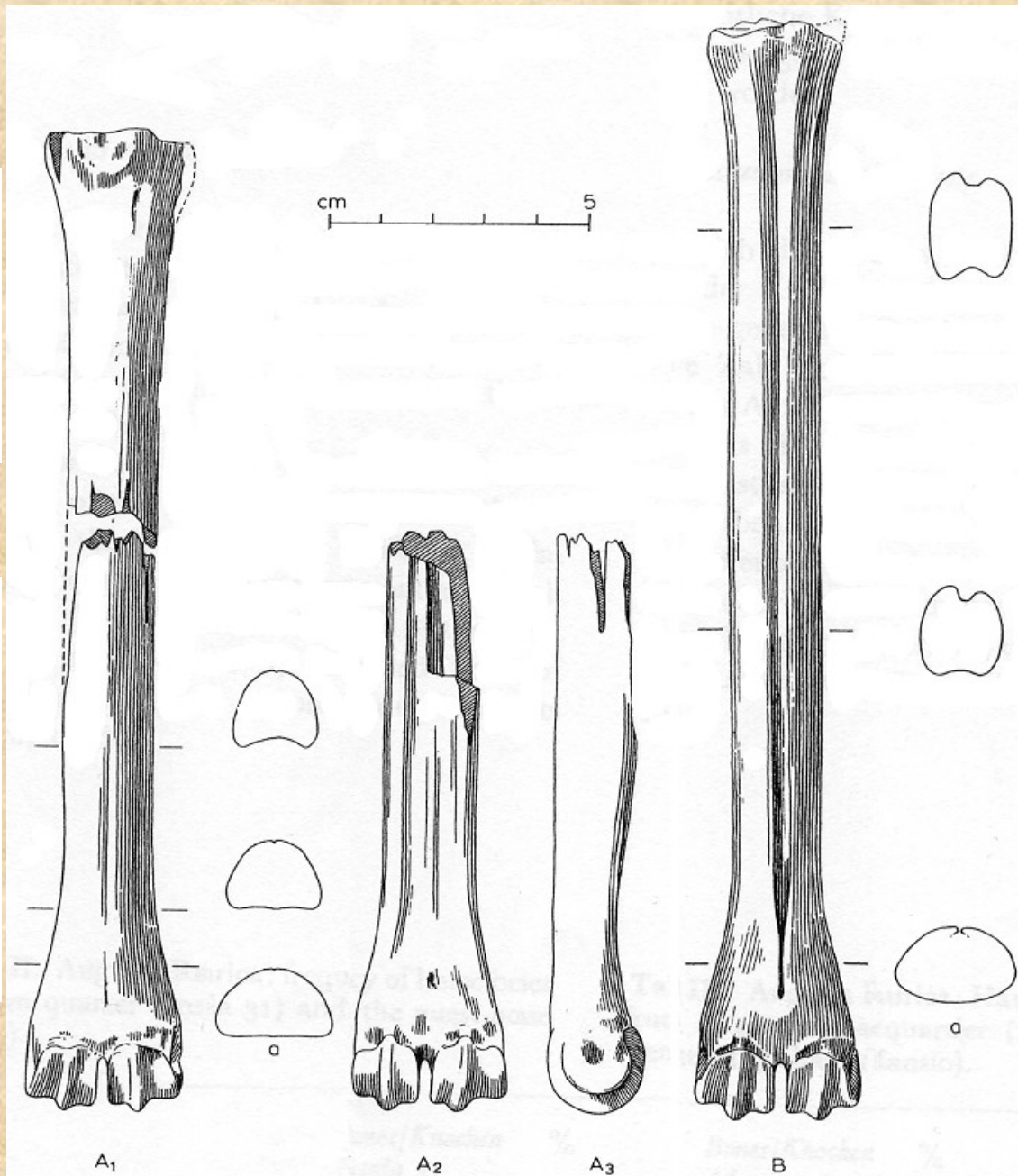
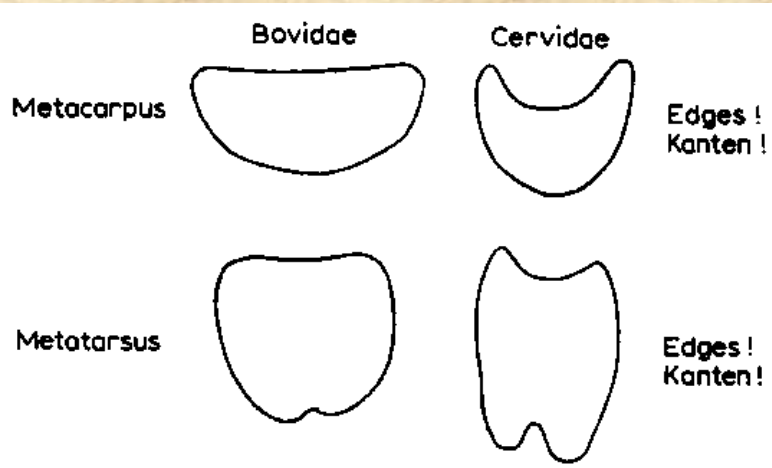
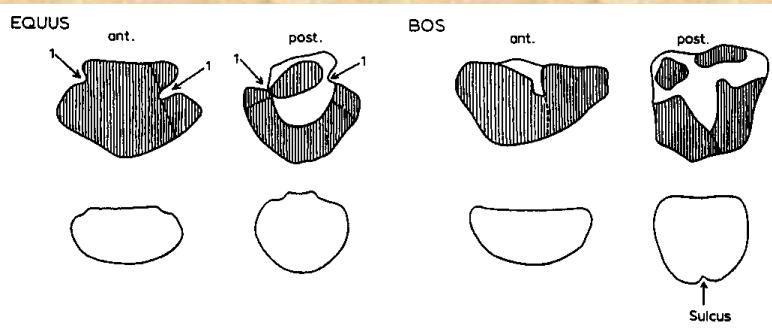
Stavba Autopodia



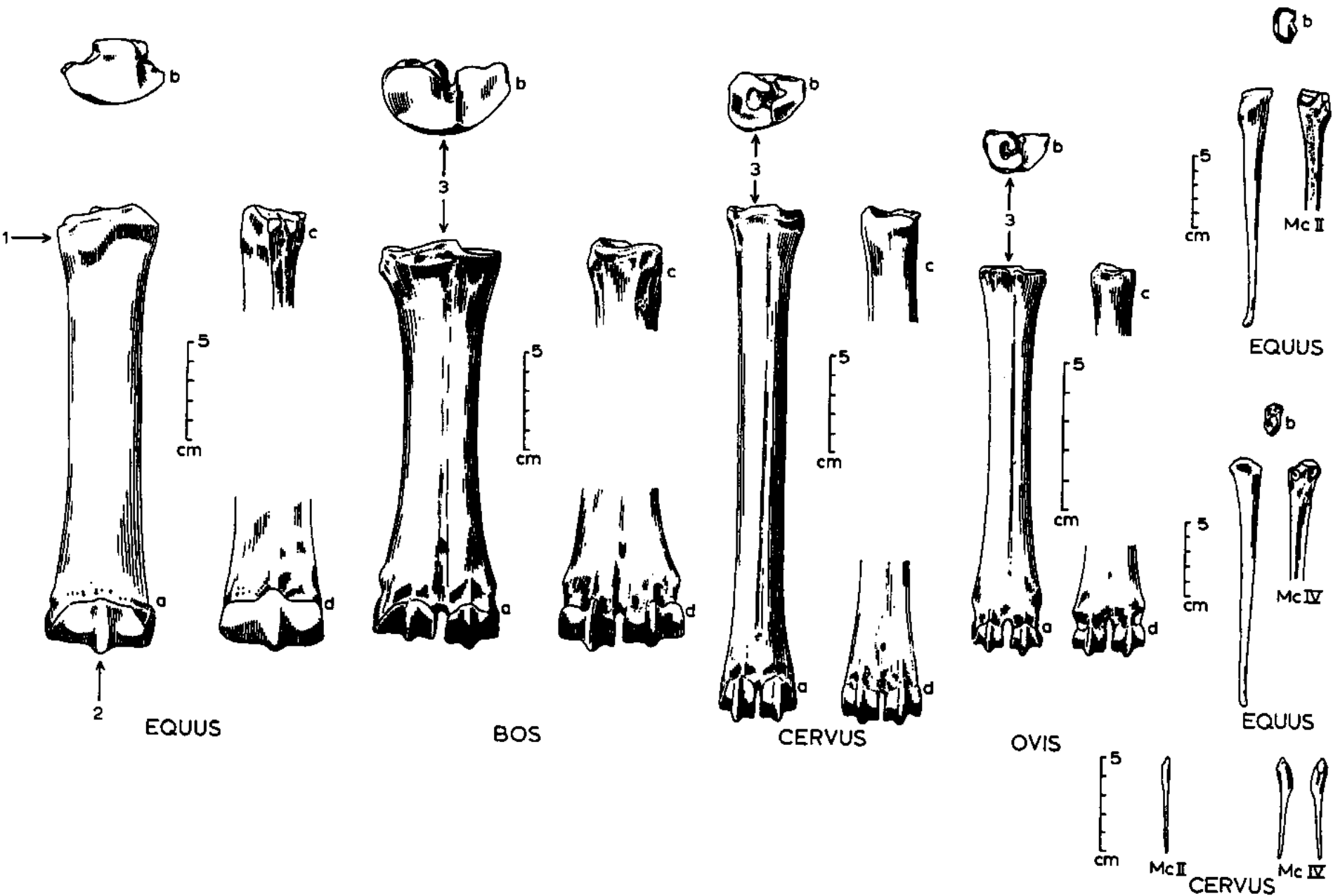
Zápěstí (*carpus*)



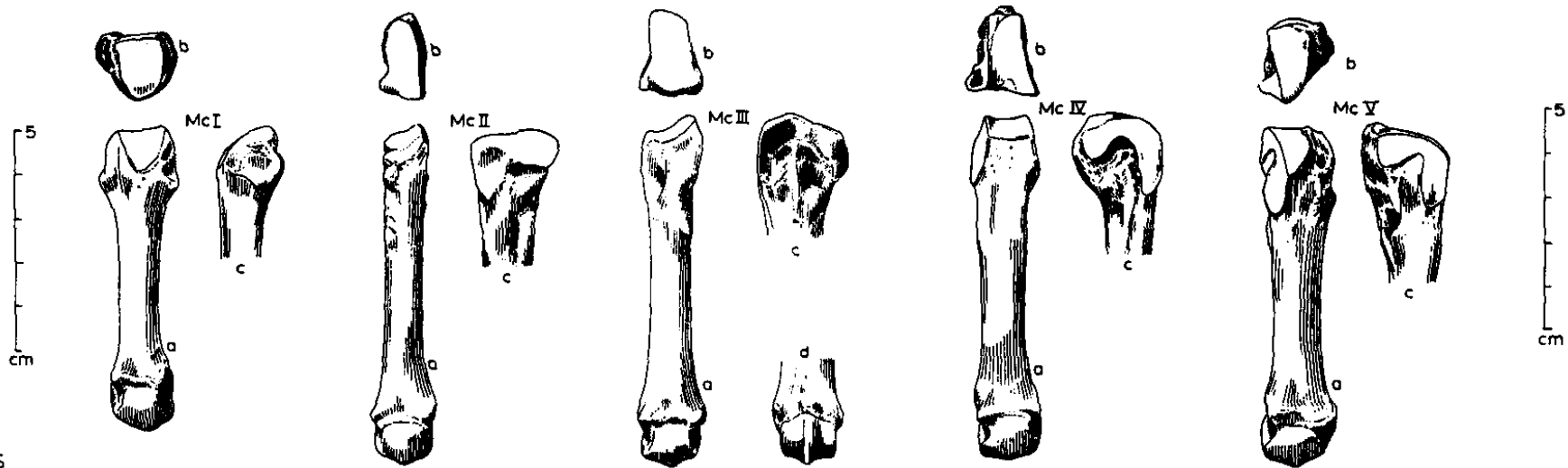
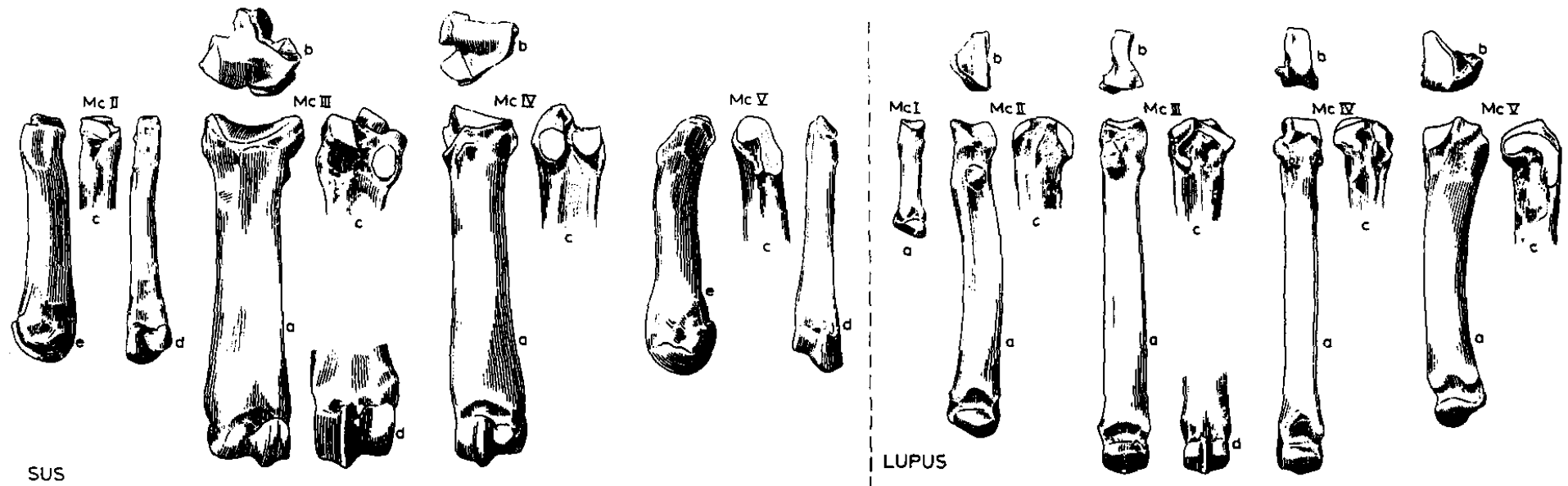
Rozdíl mezi záprstními a nártními kostmi



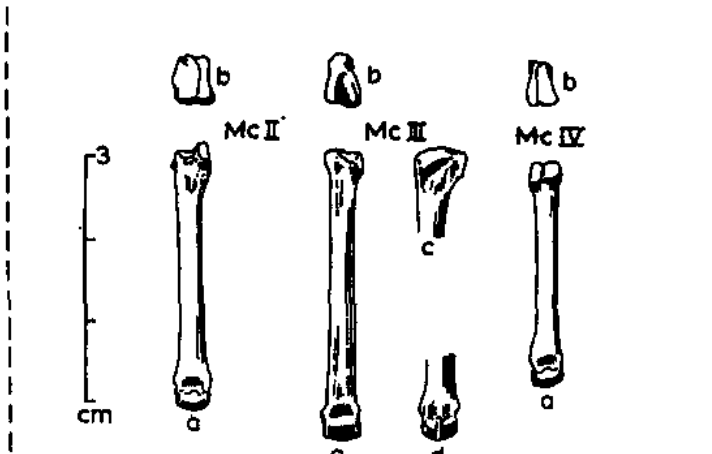
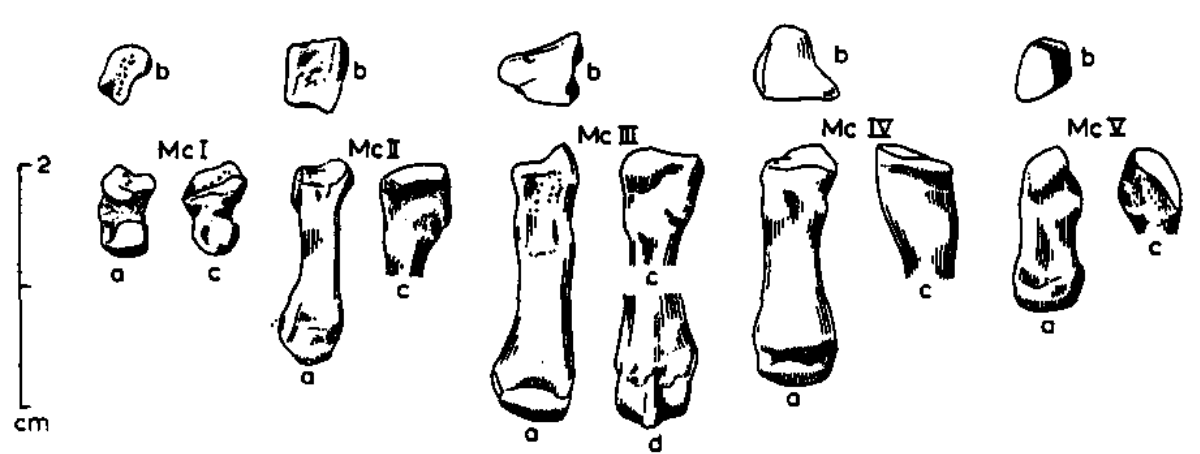
Záprstní kosti (*metacarpalia*)



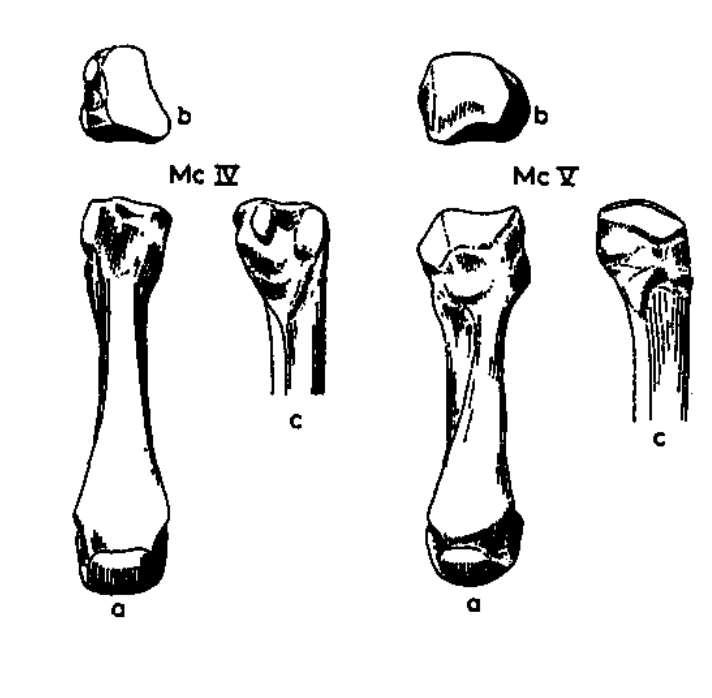
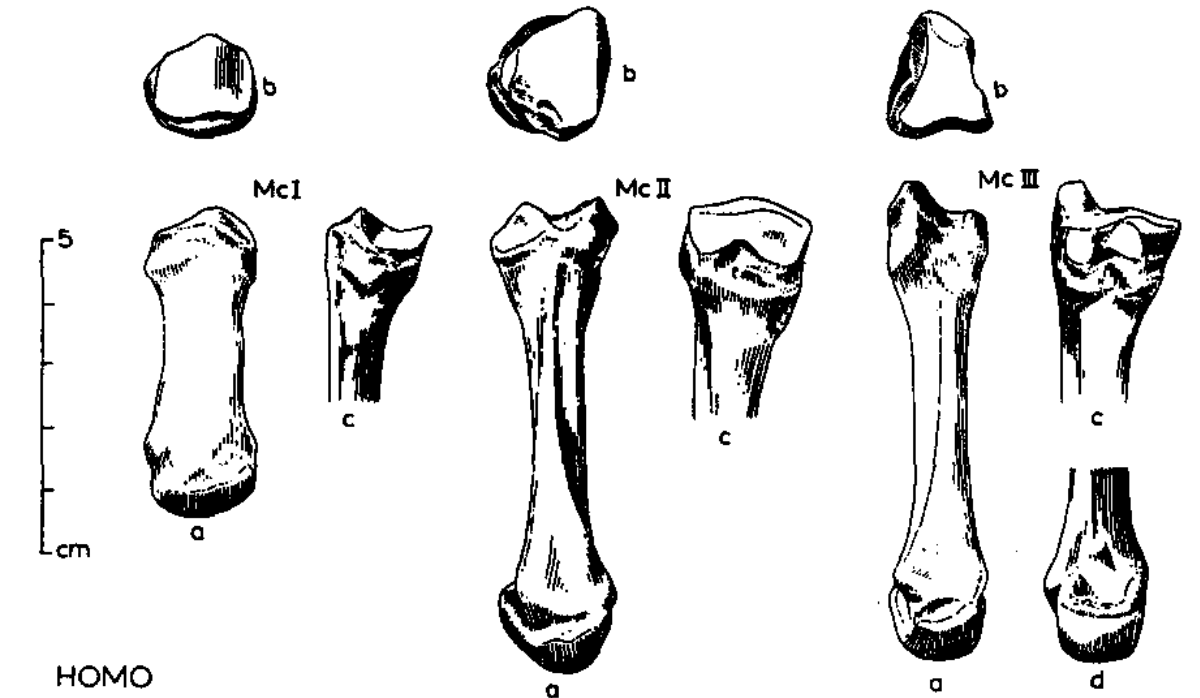
Záprstní kosti (*metacarpalia*)



Záprstní kosti (*metacarpalia*)

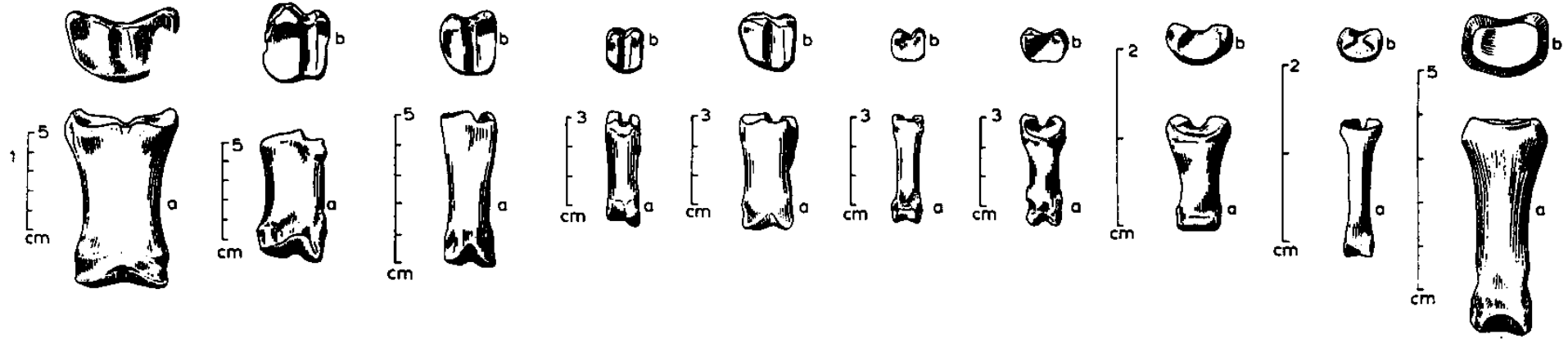


CASTOR LEPUS



HOMO

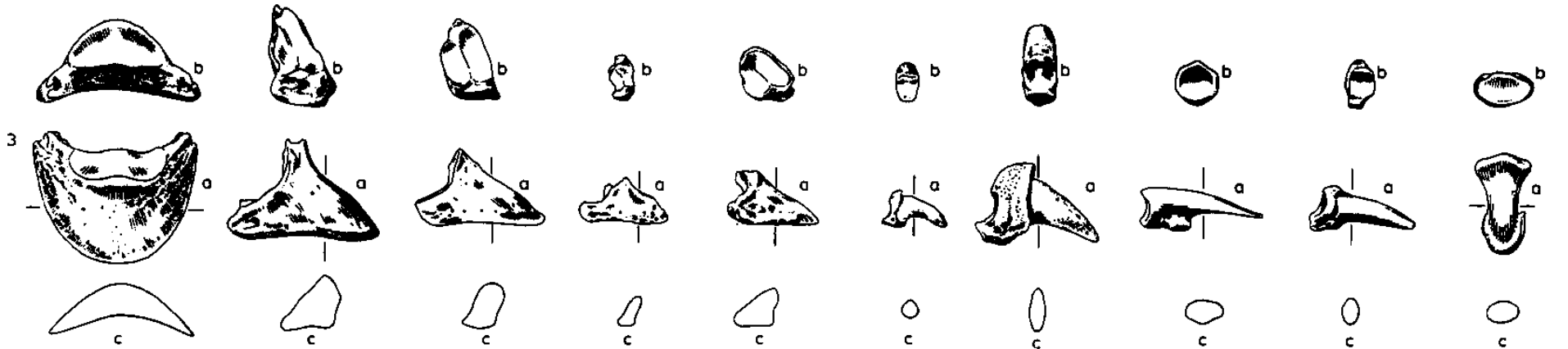
Prstní články (*phalanges*)



EQUUS BOS CERVUS OVIS SUS LUPUS URSUS CASTOR LEPUS HOMO



EQUUS BOS CERVUS OVIS SUS LUPUS URSUS CASTOR LEPUS HOMO



Děkuji za pozornost!

