

Regaining of Independence and rebuilding the country

Prof. Radosław Domke

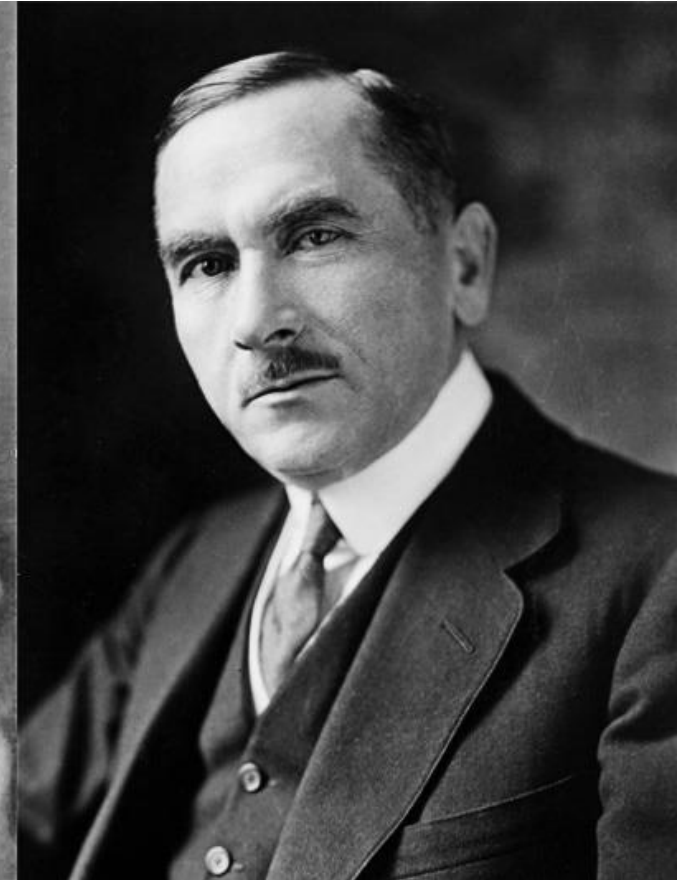
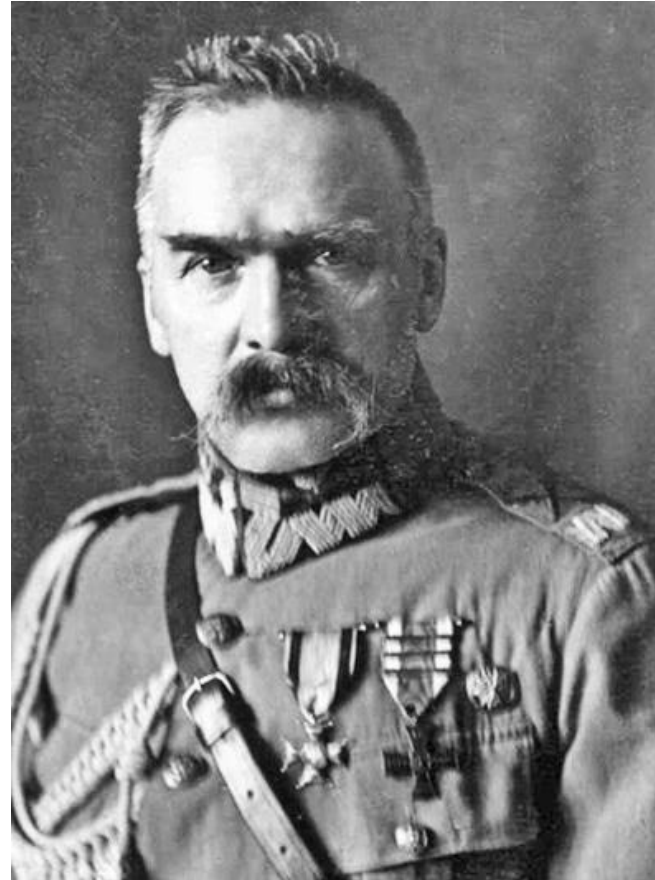
Marshal Józef
Piłsudski





Politics

Józef Piłsudski
vs Roman
Dmowski



Wincenty Witos
the leader of
farmers



Ignacy Daszyński
head of socialists



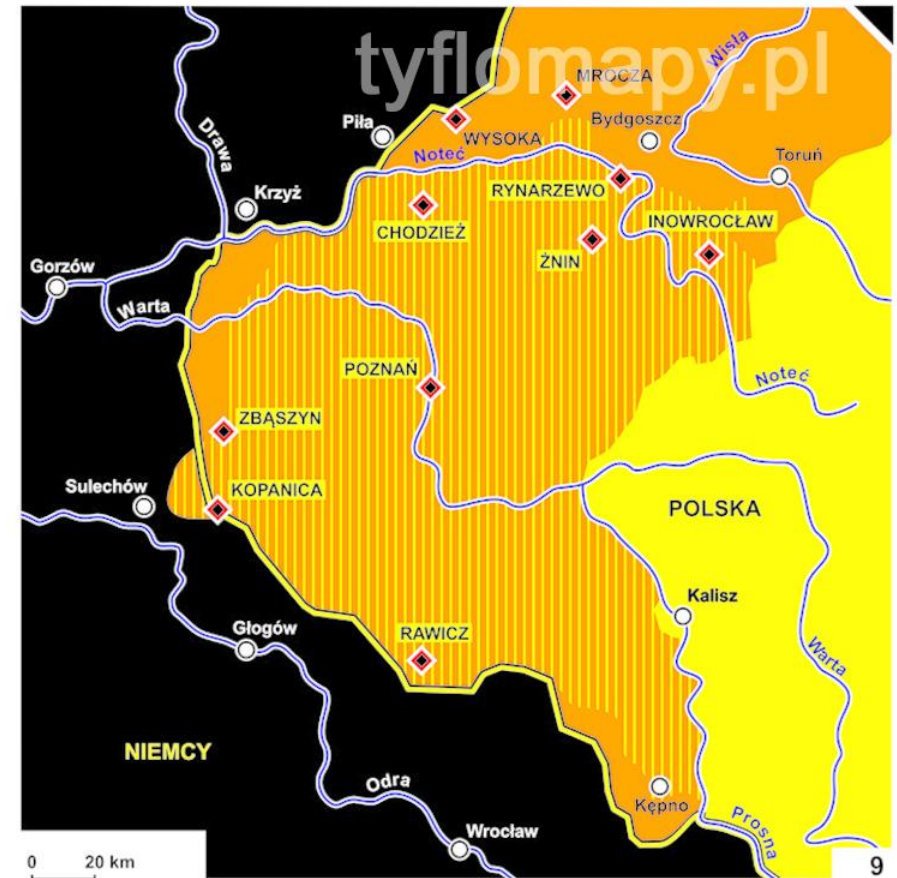
Creating the boundaries



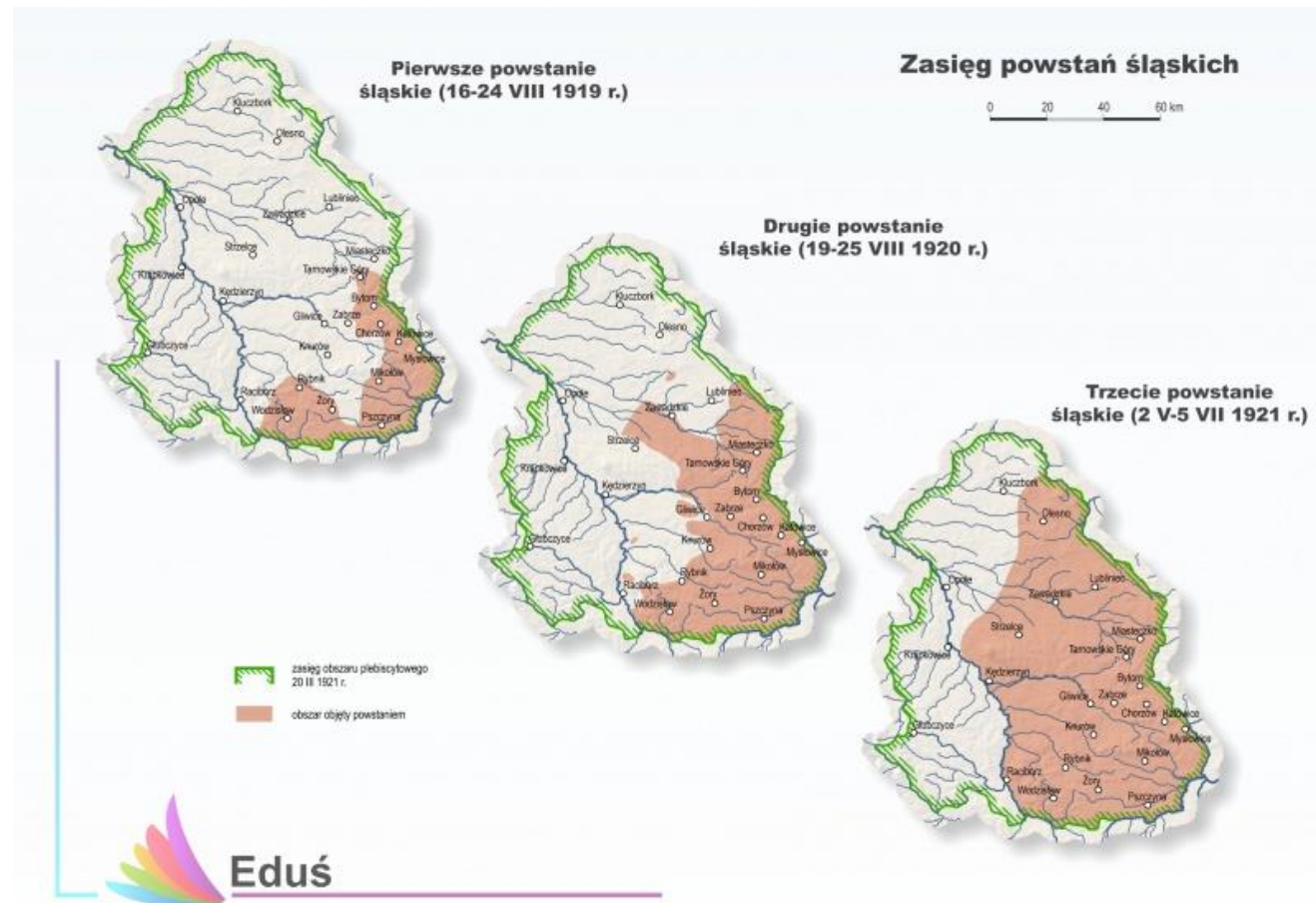
Greater Poland Uprising of 1918–1919

1918 – 1919
POWSTANIE
WIELKOPOLSKIE
1 : 1 000 000

-  tereny objęte powstaniem
-  miejsca ważniejszych walk
-  tereny przyznane Polsce na mocy traktatu wersalskiego



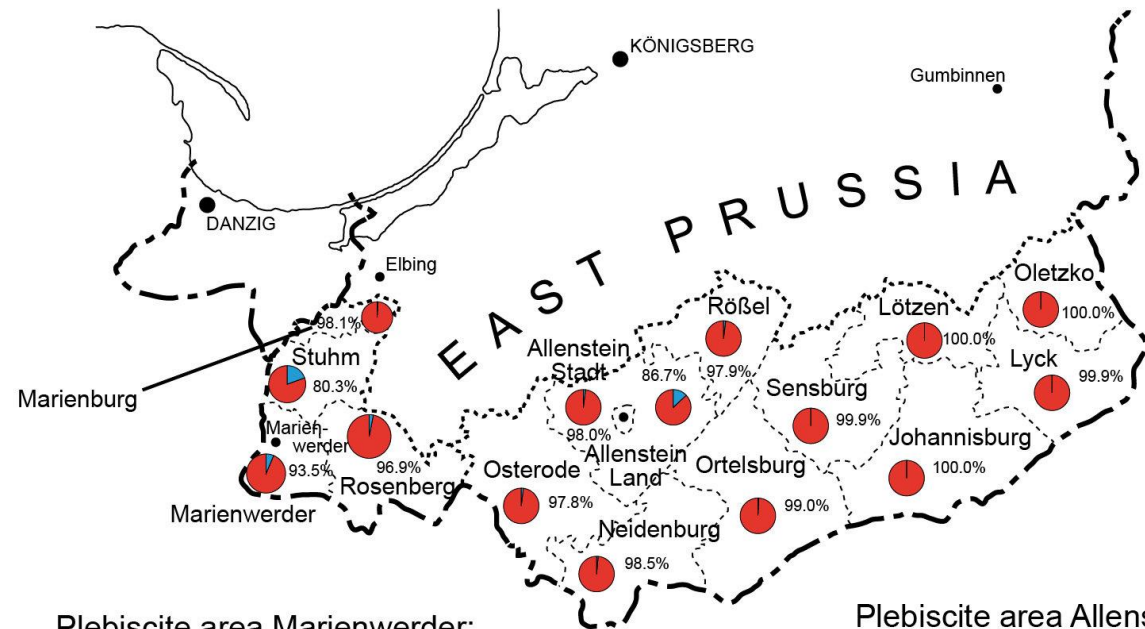
I, II and III Silesian Uprising



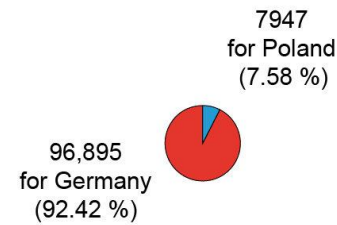
Plebiscite in Warmia, Mazury and Powiśle

Results of the plebiscite of 11 July 1920 according to districts

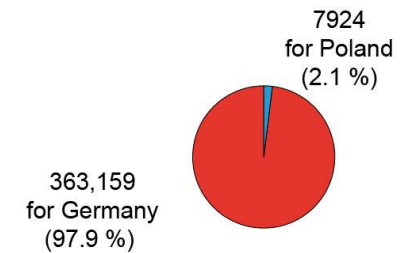
(Votes for Germany („East Prussia“) are given in percent. Results are rounded to the first digit the sizes of the circles correspond to the number of voters)



Plebiscite area Marienwerder:
104,842 Abstimmende



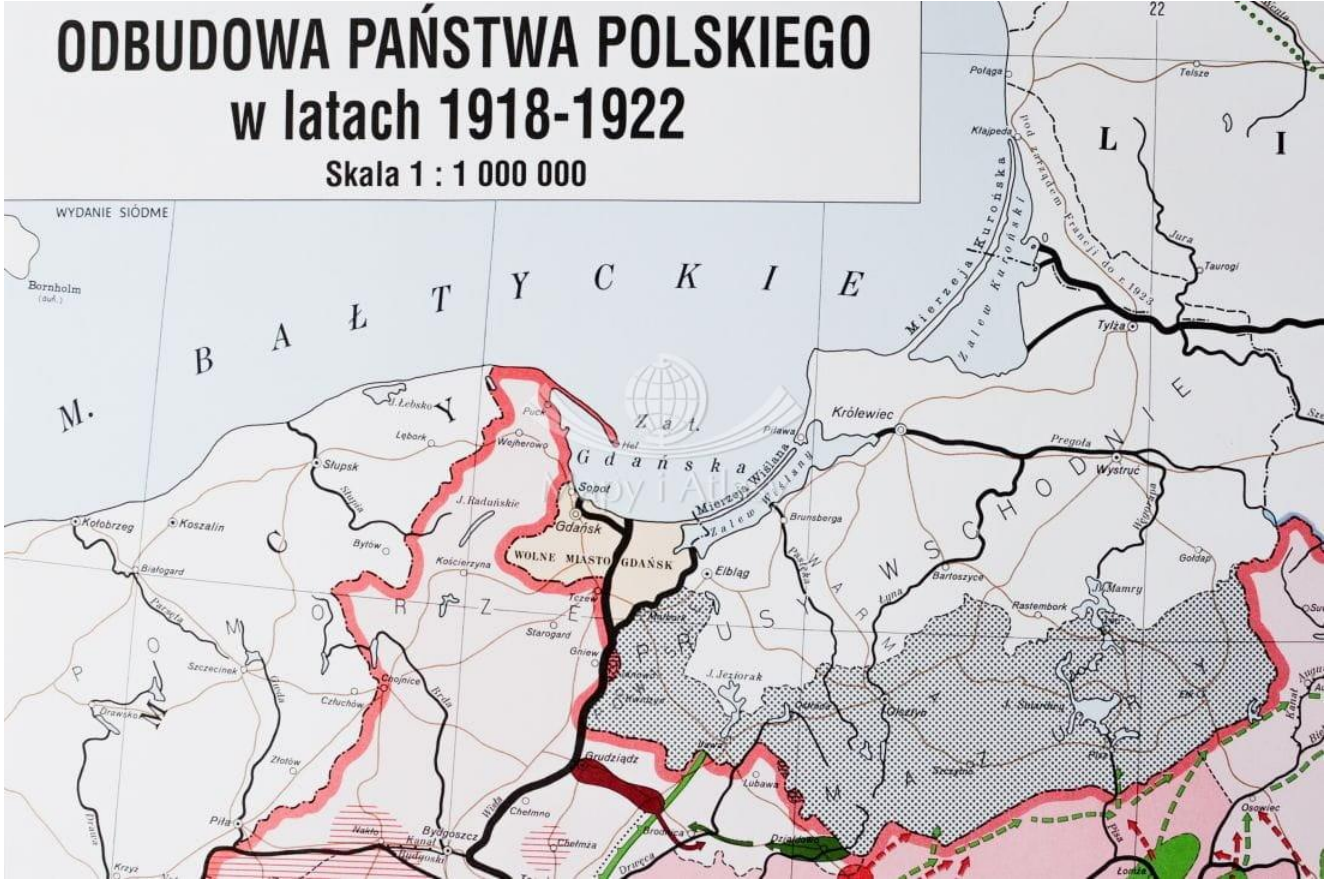
Plebiscite area Allenstein:
363,159 voters



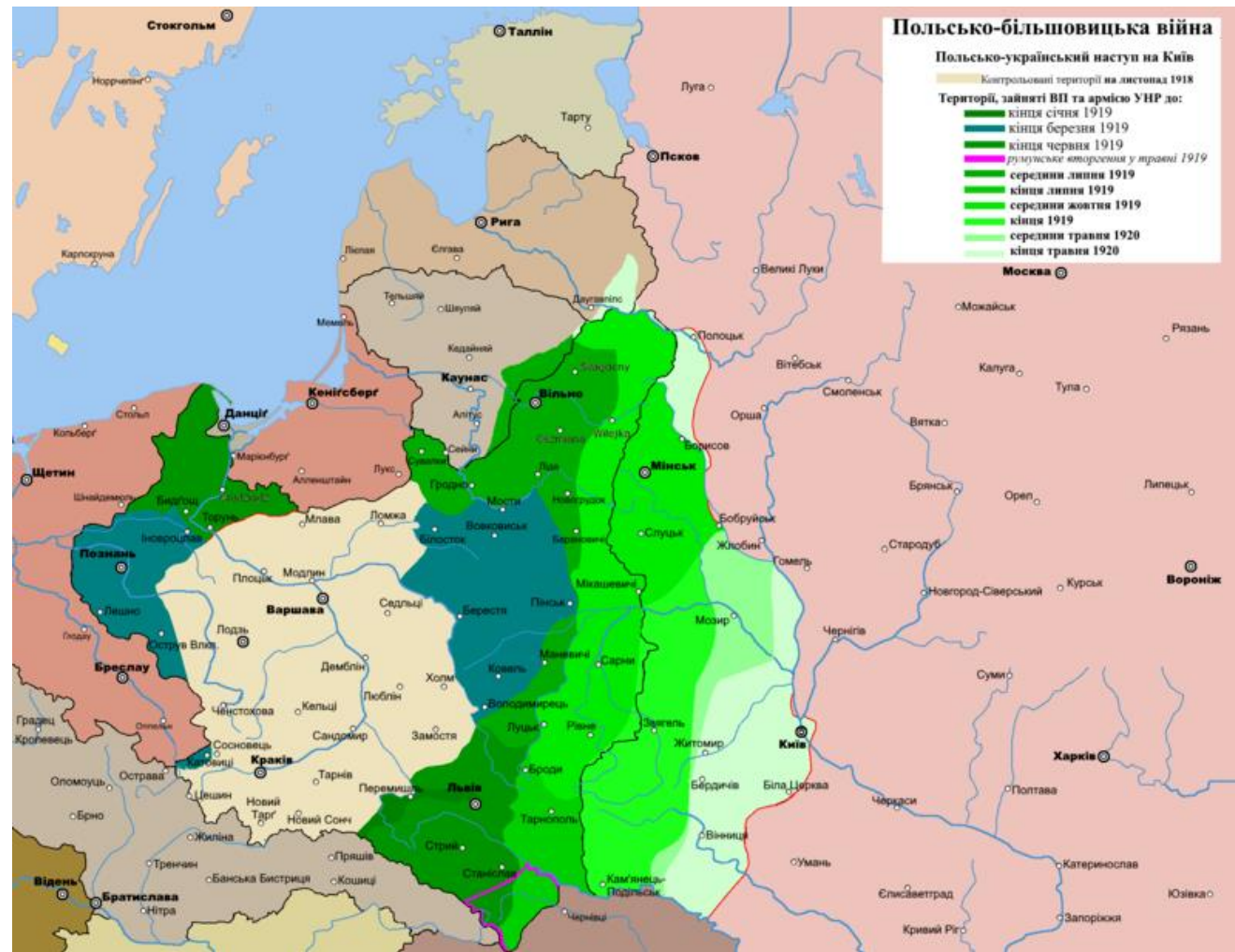


ODBUDOWA PAŃSTWA POLSKIEGO w latach 1918-1922

Skala 1 : 1 000 000



Kiev offensive



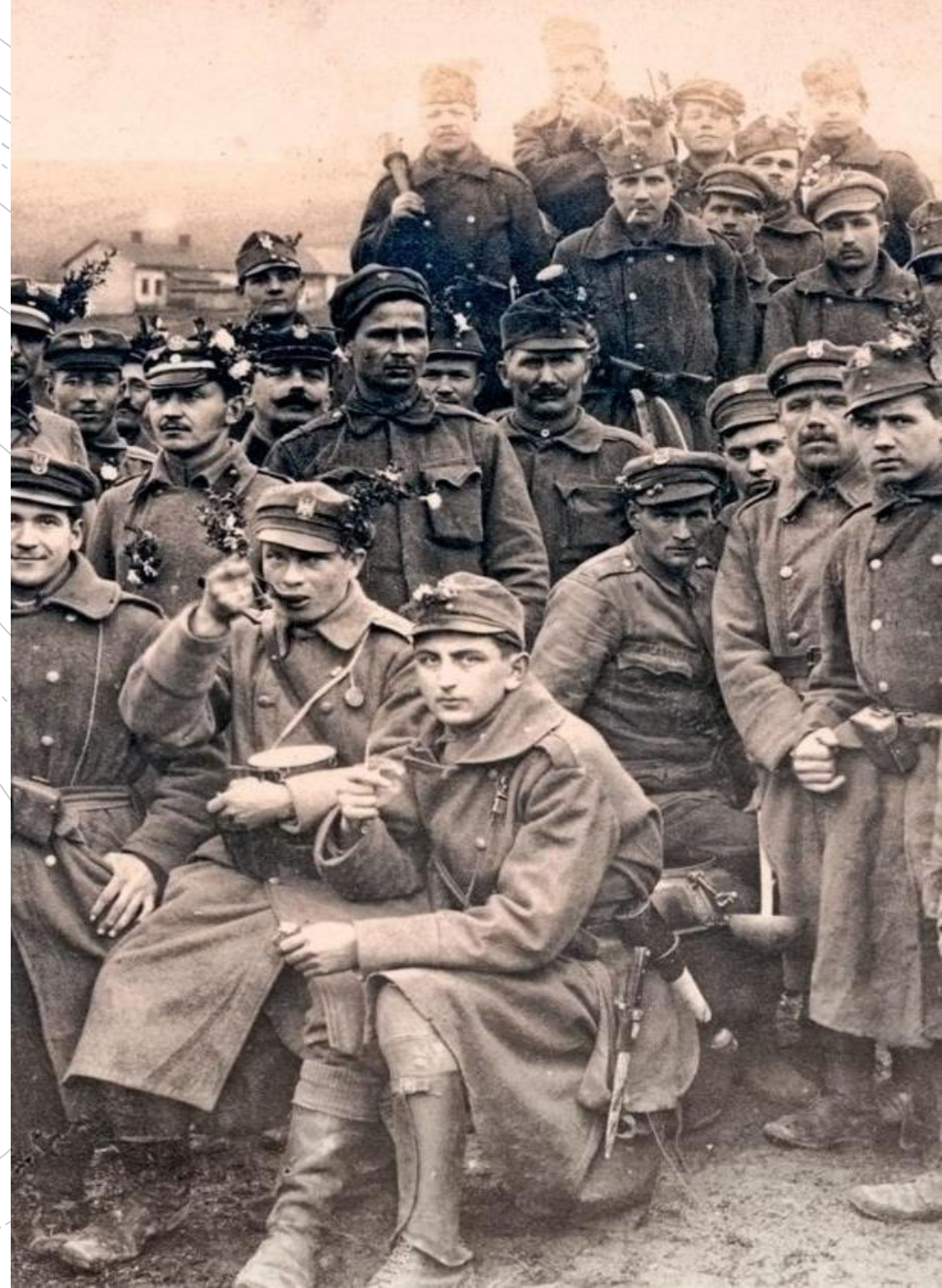
Ataman Semen Petlura



Miracle on the Vistula



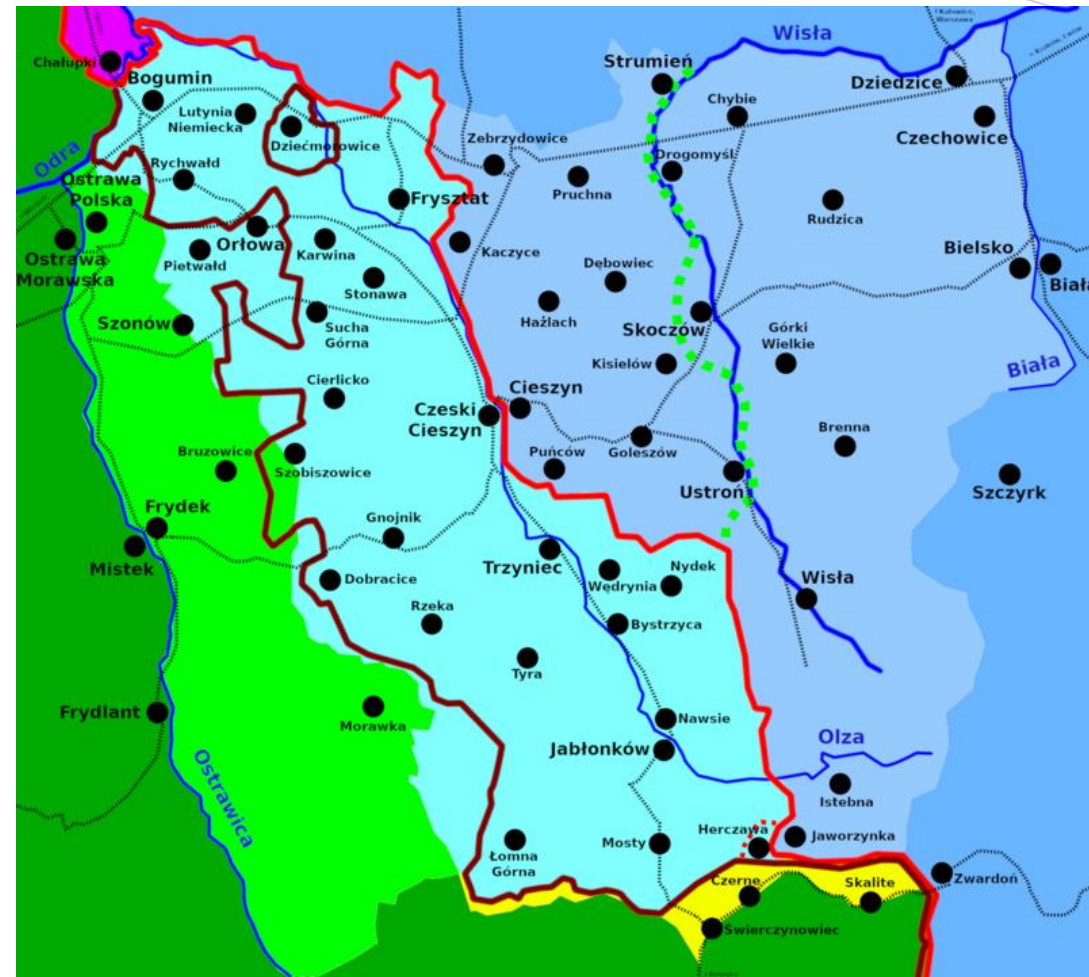
Teschen Silesia



Teschen Silesia



Teschen Silesia



- | | | |
|--|---|--|
| Poland | ■ | Polska |
| Czechoslovakia (now Czech Republic) | ■ | Czechosłowacja (obecnie Czechy) |
| Germany (Poland from 1945) | ■ | Niemcy (od 1945 Polska) |
| Polish part of Cieszyn Silesia (now) | ■ | Polska część Śląska Cieszyńskiego (współcześnie) |
| Czech part of Cieszyn Silesia (now) | ■ | Czeska część Śląska Cieszyńskiego (współcześnie) |
| Border from the agreement of November 5, 1918 | — | Granica z porozumienia 5 XI 1918 |
| Border 28.08.1920(*) - 02.10.1938, and since 09.05.1945 | — | Granica od 28 VIII 1920(*) do 2 X 1938 i od 9 V 1945 |
| Incorporated to Poland in October 1938 (with later border corrections) | ■ | Ziemie przyłączone do Polski w październiku 1938 (wraz z późniejszymi korektami) |
| Part of Slovakia taken over on 25.10.1938 | ■ | Część Słowacji zajęta 25 X 1938 |
| Main rivers | — | Główne rzeki |
| Railways at the time of the conflict | - - - - - | Linie kolejowe w dobie konfliktu |
| Maximal extent of the Czech offensive 28-30.01.1919 | ■ | Maksymalny zasięg ofensywy czeskiej 28-30 I 1919 |
- (*) apart from Herczawa (to Czechoslovakia on 20.06.1924) (*) oprócz Herczawy (do Czechosłowacji 20 VI 1924)

A red speech bubble with a white outline and a small tail pointing downwards. The word "Economy" is written in white, sans-serif font in the center of the bubble. The background features a pattern of thin, light gray concentric circles and dashed lines, creating a ripple effect.

Economy

Port in Gdynia



Central Industry
District



Building of water
dam in Rożnów
Dunajec river, 1939

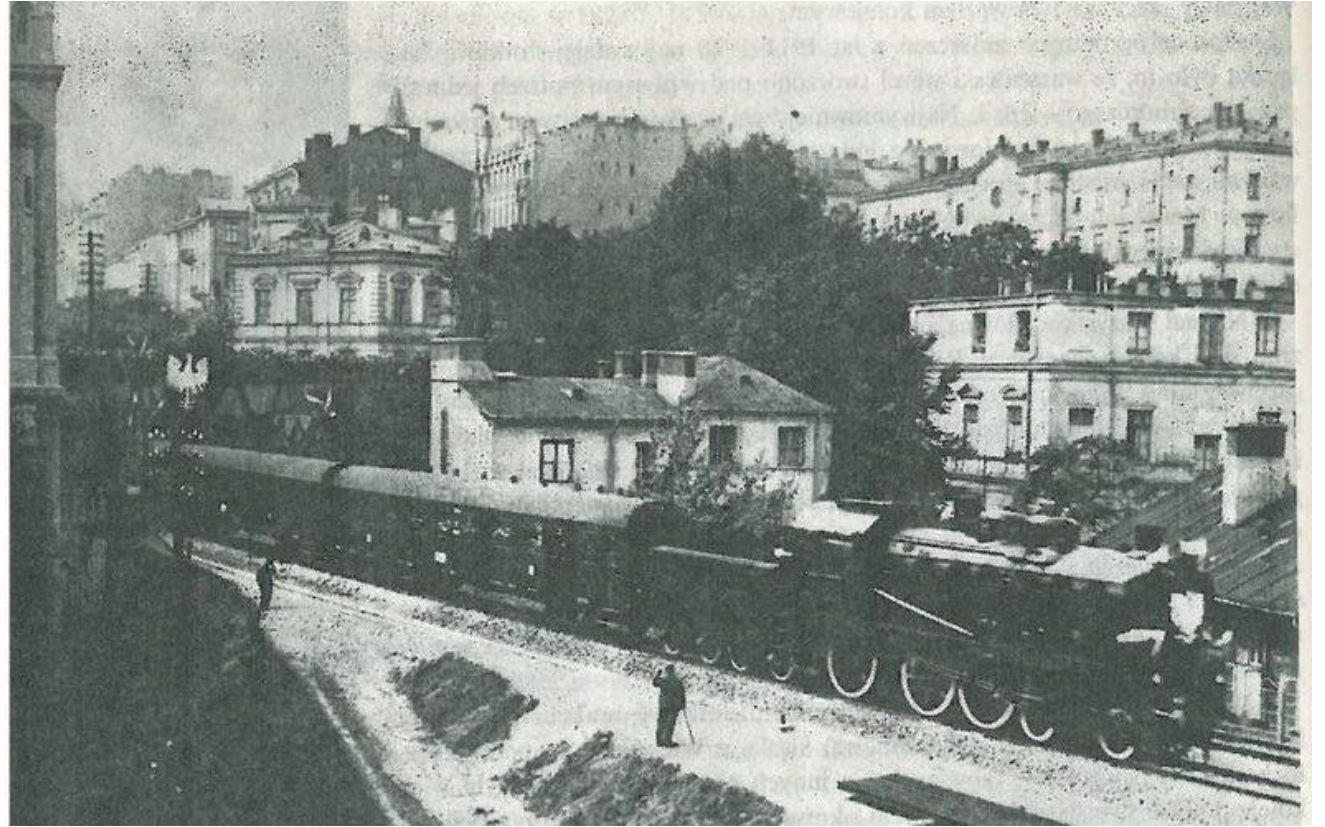


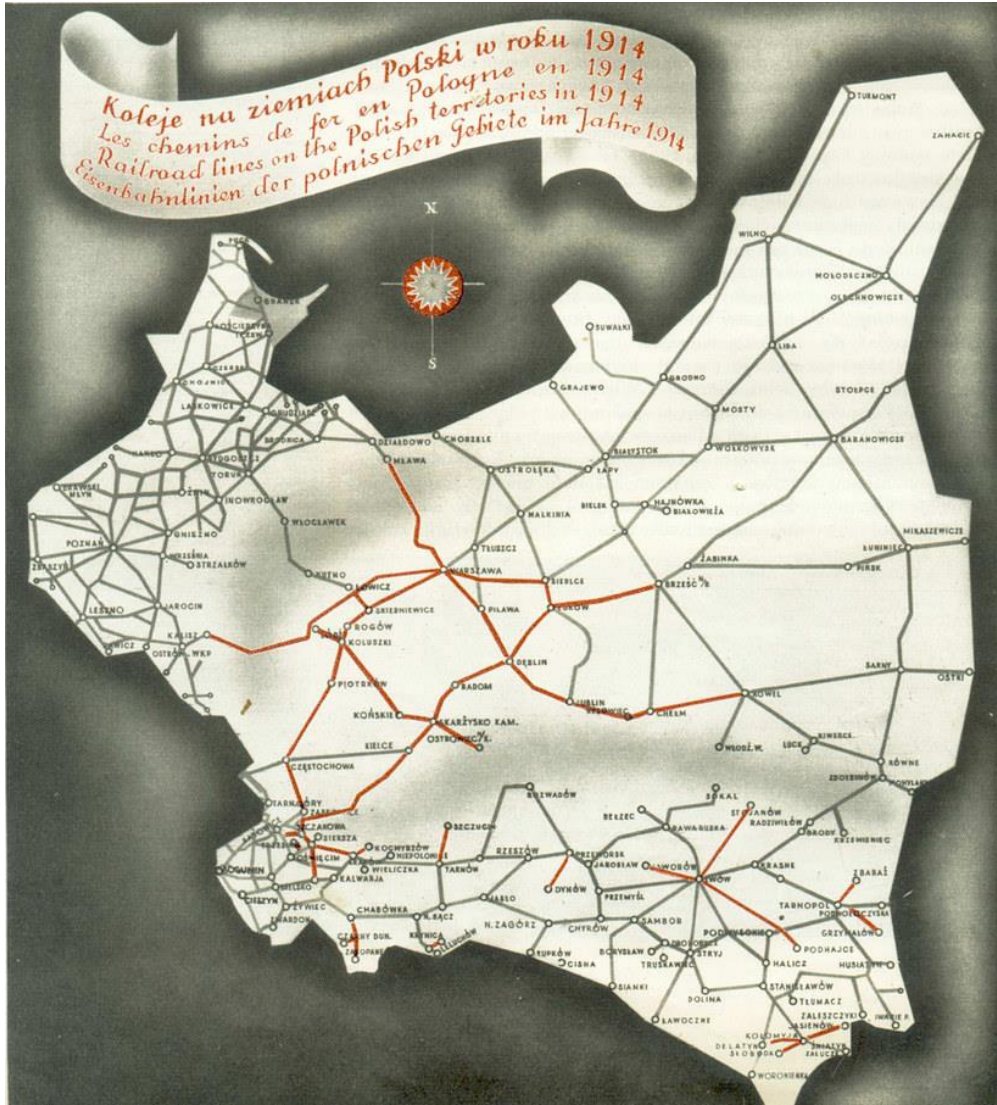
Power plant in
Stalowa Wola, 1939

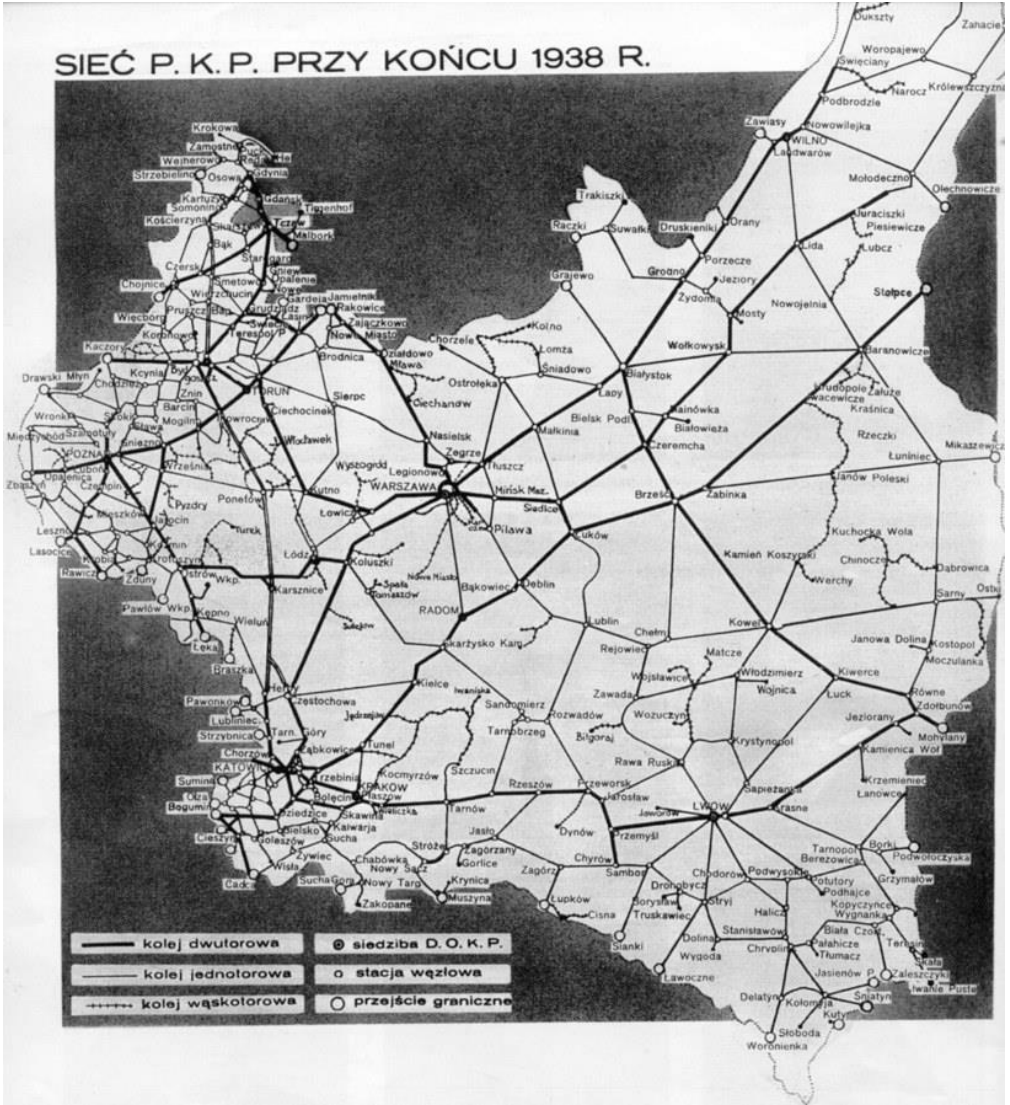


Handover Andrew Collins, pp. 131-134

railways

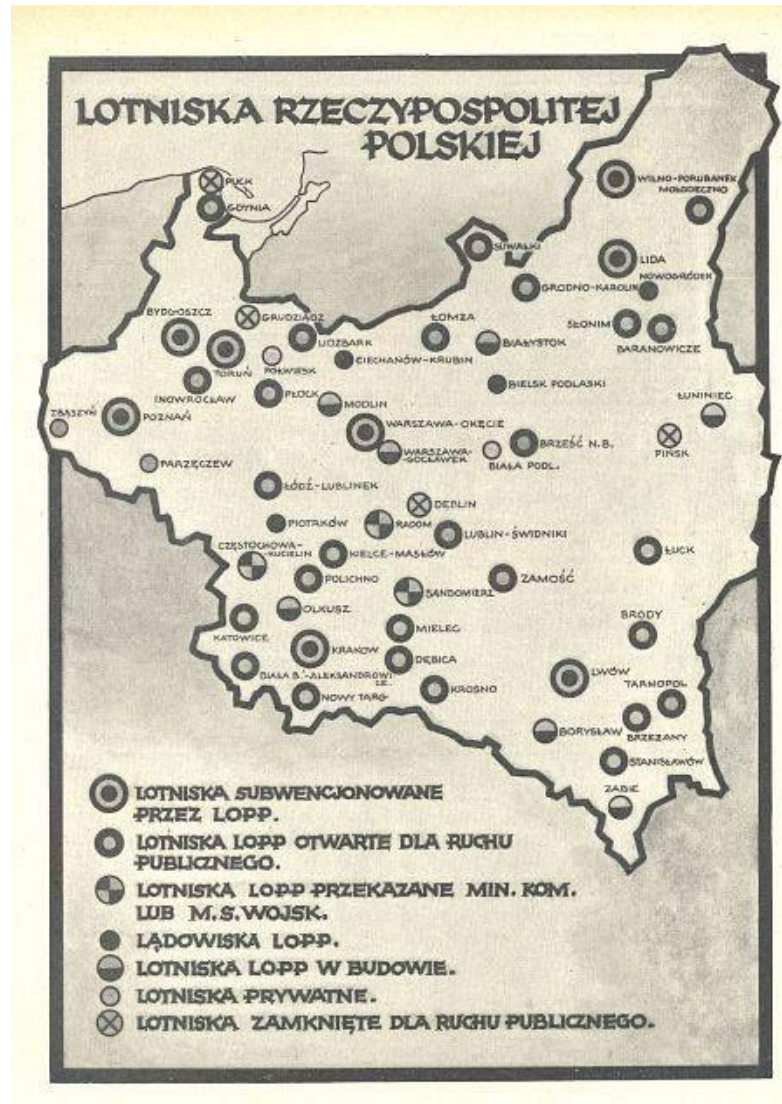








Airports



Polish mark



Polish złoty



A red speech bubble graphic with a white outline, containing the text "Thank you for attention". The bubble has a tail pointing downwards and to the left.

Thank you for
attention